



# Community Resilience Partnership

## Freeport Community Workshop

# AGENDA



1. Community Resilience Partnership
2. Climate Hazards and Impacts
3. Enrollment Materials
4. Overview of priority action areas
5. Questions, Open House, Voting

1

**Community Resilience  
Partnership**

# Community Resilience Partnership

Leverage state support for municipal climate action

Grants awarded for:

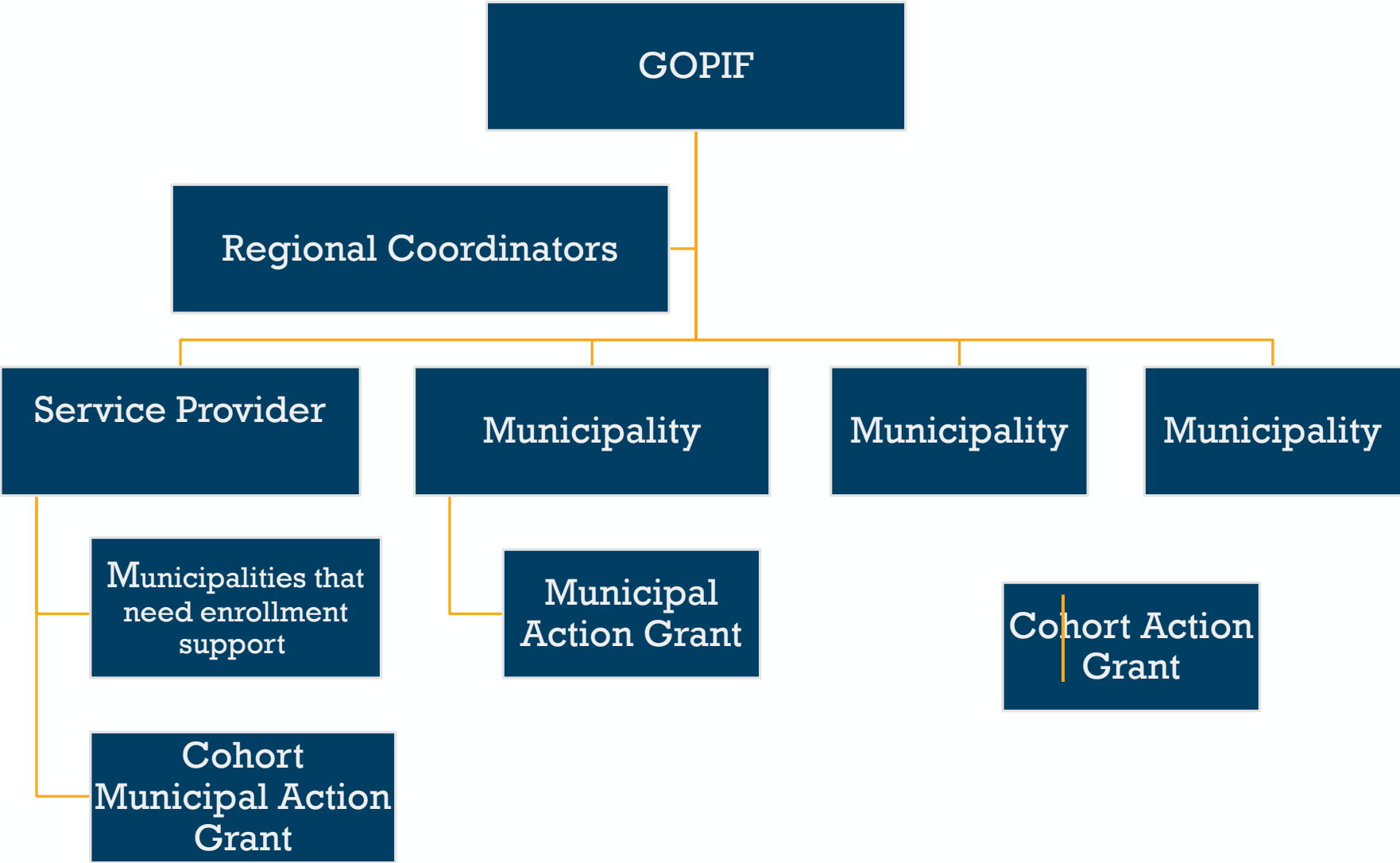
- Service Provider
- Community Action Grants



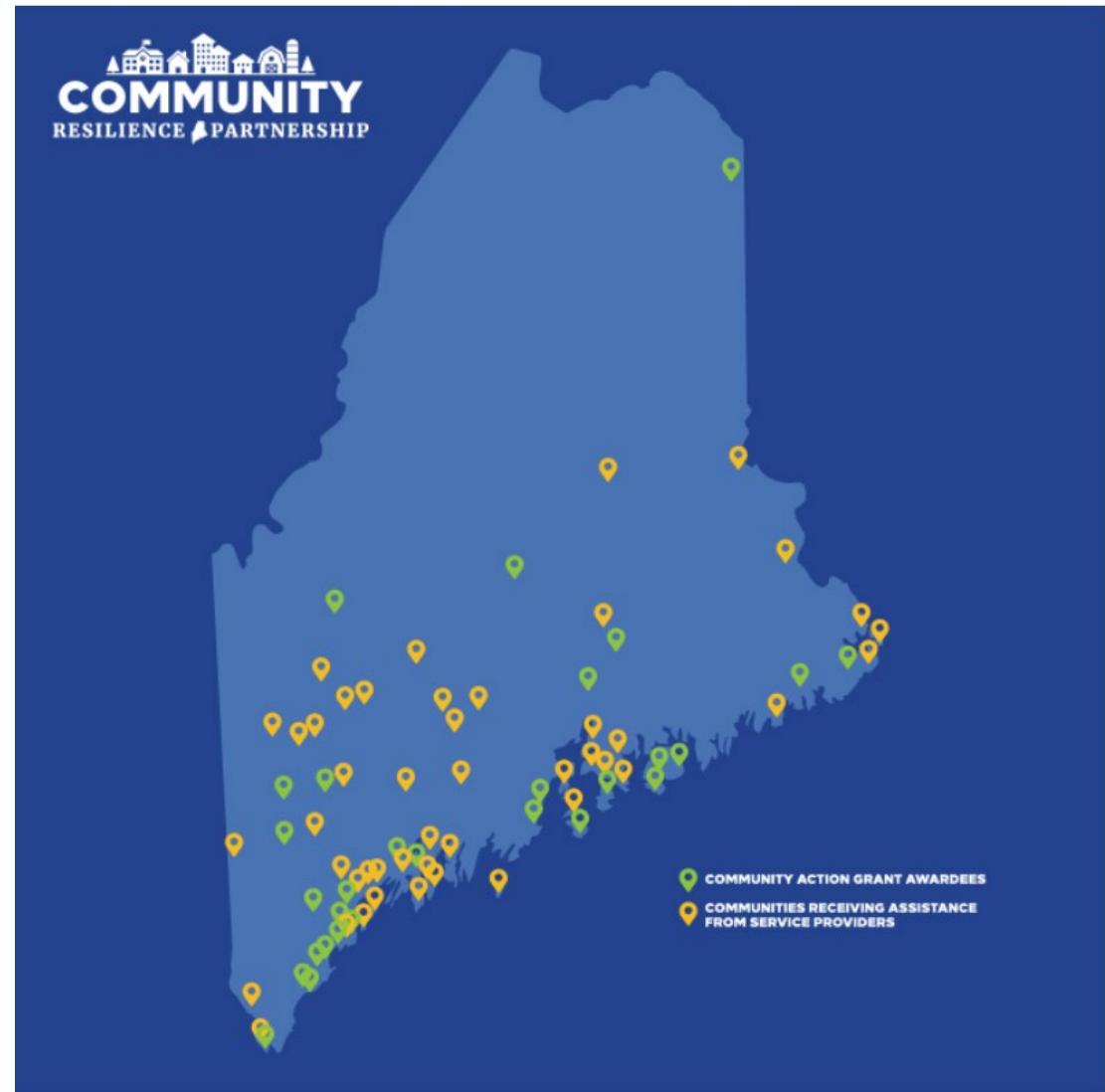
GOVERNOR'S OFFICE OF  
Policy Innovation  
and the Future



# GOPIF Community Resilience Partnership Grants



# COMMUNITY ACTION GRANTS



Up to \$50,000 per community

# CRP AWARDS IN THE REGION



## Community Action Grants

- Windham: Town Energy Plan
- Bridgton: Open Space Plan
- Portland: Climate Resiliency Zoning
- South Portland: Street Design

## Climate Action Plans

- Portland/South Portland
- Cumberland
- Falmouth

# SERVICE PROVIDER GOALS



## Outcomes of this process for your town:

- Enrollment in partnership and access to funding
- Community engagement and prioritization of initial climate resilience and clean energy actions
- Apply for community action grant in September

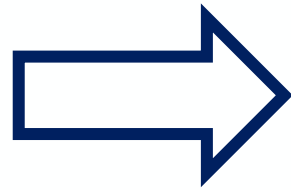


# 2

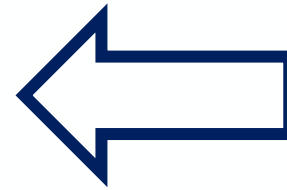
## Climate Hazards and Impacts

# Definitions

Climate Hazards



Climate Impacts



Social Vulnerabilities



# Maine Climate Hazards and Impacts

Maine is experiencing an increase in local climate hazards NOW

## Climate Hazards

## Potential Impacts

Sea Level Rise

Coastal Erosion

Coastal Flooding

Changing Ecosystems

Ocean Warming and Acidification

Changing Marine Ecosystems

Harm to Fishing Industry

Increased Precipitation and Storm Intensity

Coastal and Inland Flooding

Overburdened Wastewater System

Declining Water Quality

Warming, More Variable Temperatures

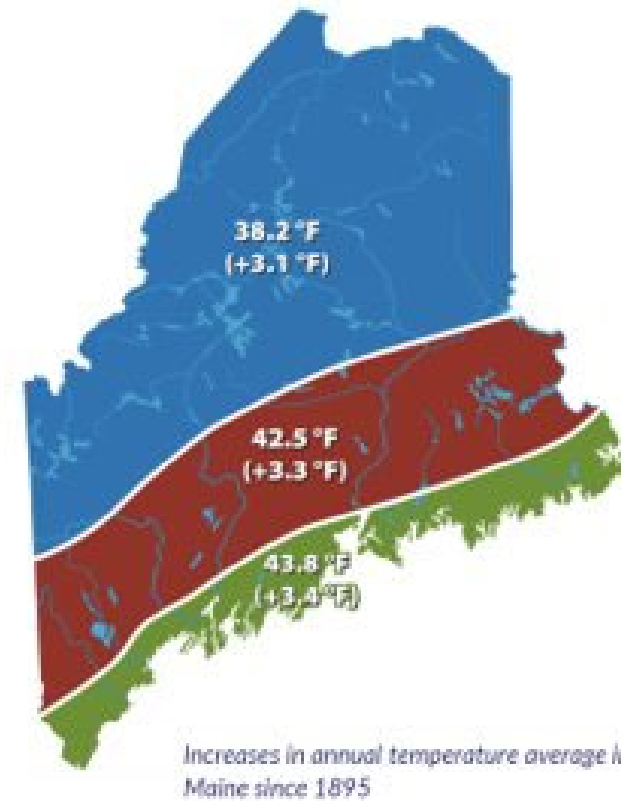
Increased Energy Consumption for Summer Cooling

Increase in Vector-borne Diseases

Changing Terrestrial Ecosystems



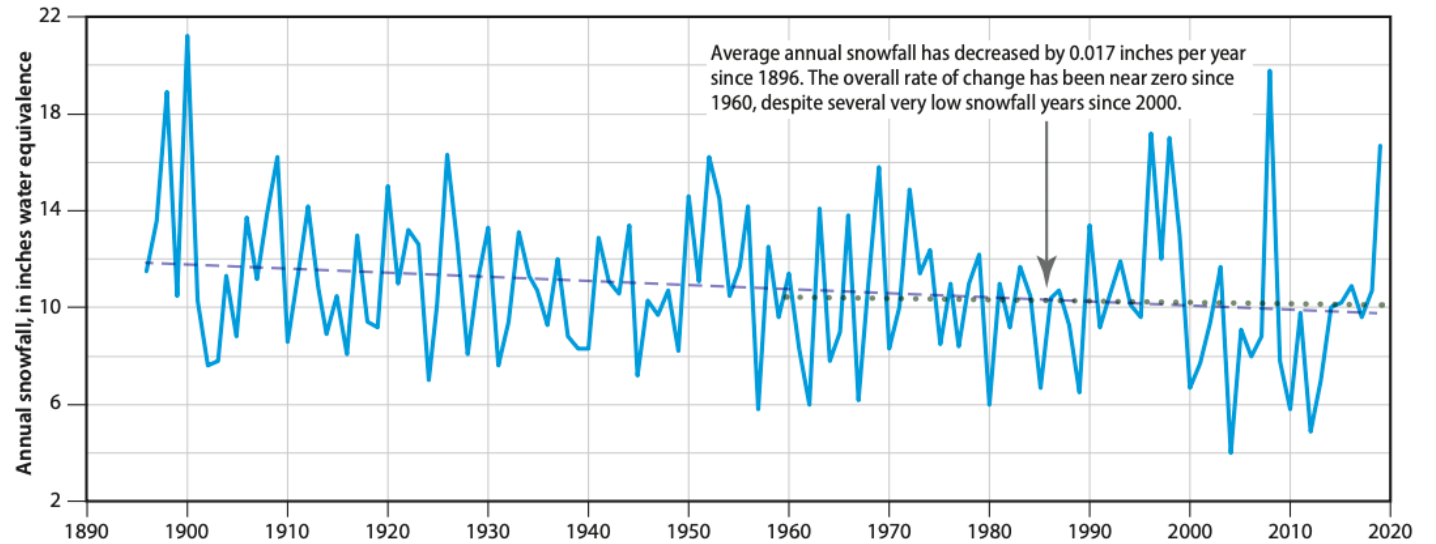
# WARMER, MORE VARIABLE TEMPERATURES



- State has warmed more than 3°F since 1895
- Maine can expect 36 high heat days (over 90°F) per year by 2100, compared to one per year on average from 1971 to 2000

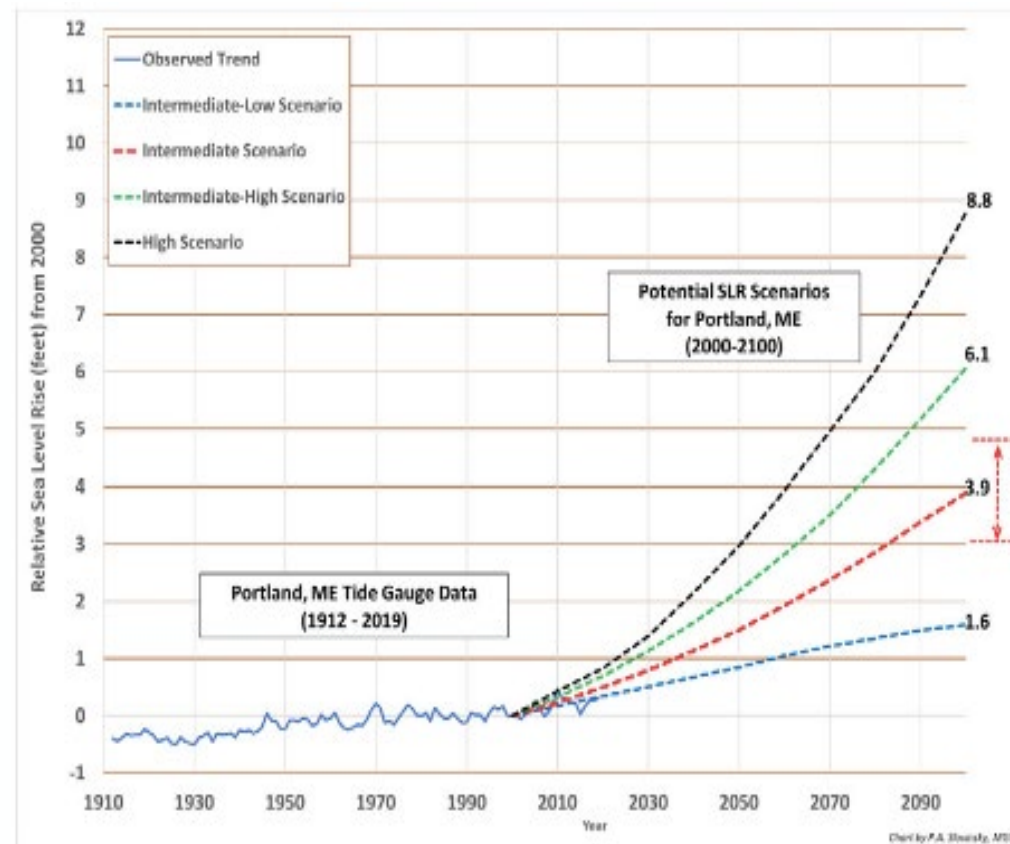
# CHANGING PRECIPITATION

Maine Annual Snowfall, 1896–2019



- Average yearly precipitation in Maine increased by 15% since 1895 and
- Anticipated additional 5% increase in precipitation by 2050
- Likely increase intensity and variability of precipitation
- Likely change in type of precipitation

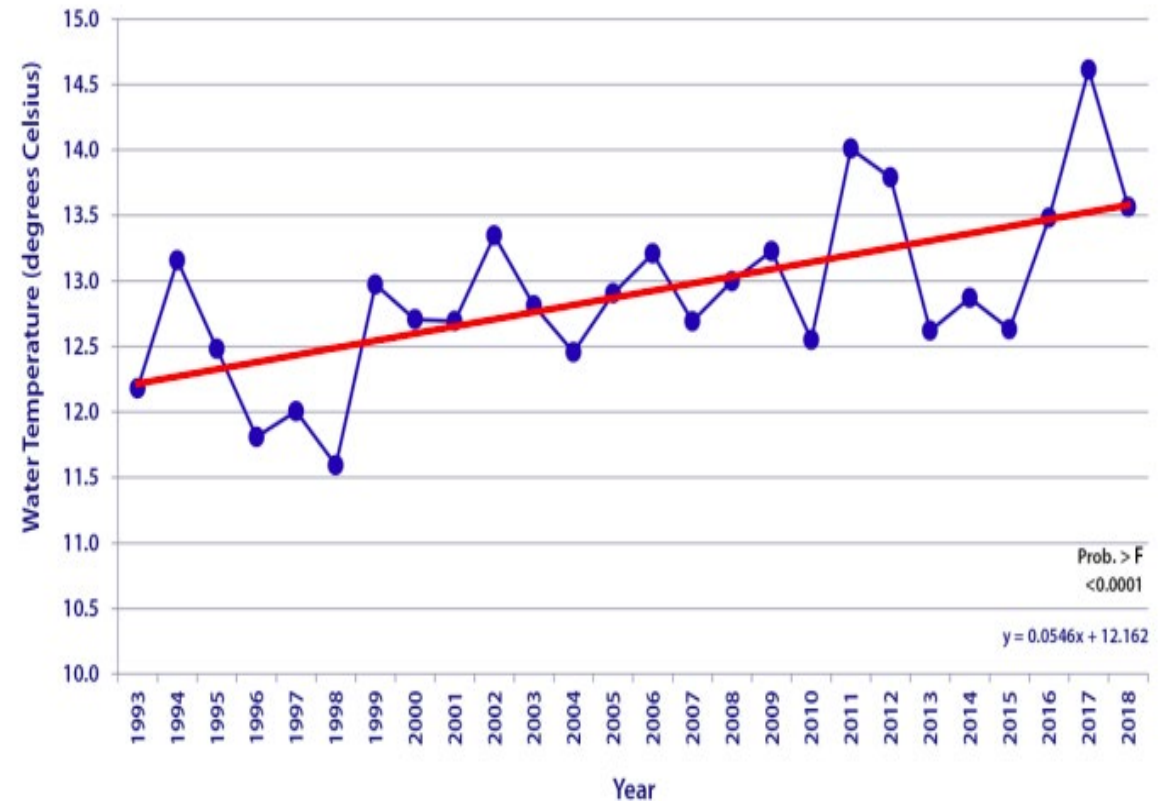
# SEA LEVEL RISE



- Sea levels have risen 7.5” inches since 1912
- Range of sea level rise scenarios depend on many complex factors
- State planning for estimated 1.5 ft increase in sea level rise at 2050, possibility of 3.6ft
- Potential for 15-20x more flooding days by 2100

# OCEAN WARMING AND ACIDIFICATION

Warming Temperatures in Casco Bay (1993 – 2018)

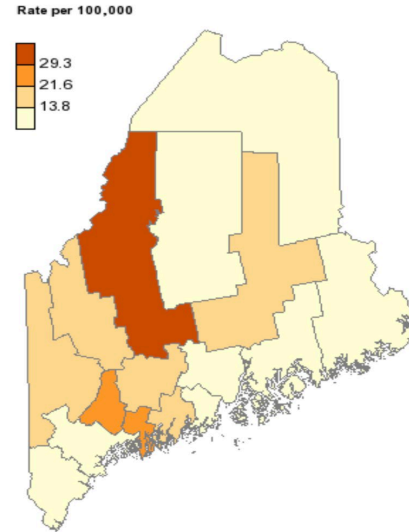


- Casco Bay water temperatures have increased 2.5°F between 1992 and 2018
- Between 2004 and 2013, the Gulf of Maine warmed 0.41°F per year, a rate faster than 99% of the world's oceans

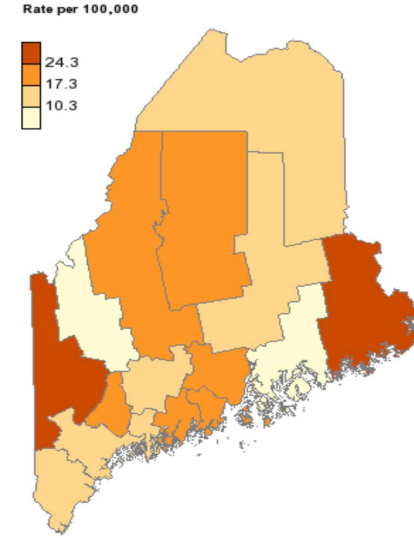
# WHAT THIS MEANS FOR YOU

Climate Impacts

Rate of Heat Illness ED Visits  
by County, Maine 2003  
Place Based on: Residence



Rate of Heat Illness ED Visits  
by County, Maine 2017  
Place Based on: Residence



## Health Risks

Rate of Heat Illness Emergency Department Visits  
by County in Maine from Maine CDC

## Shifting Ecosystems





## Strain on Critical Infrastructure



WHAT THIS MEANS  
FOR YOU

## Changing Natural Resource Economy



Climate Impacts

## Decline in Water Quality



## WHAT THIS MEANS FOR YOU



## Climate Impacts

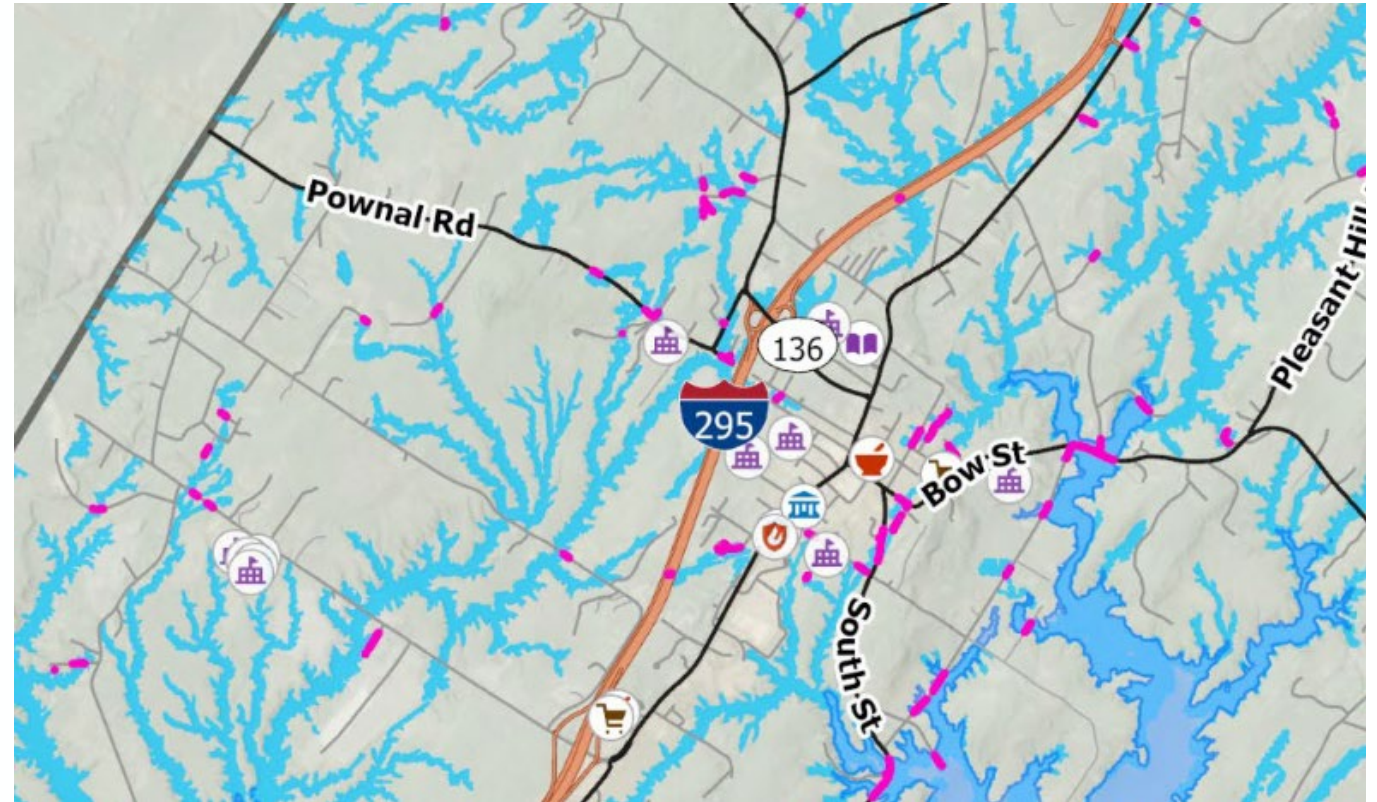


## Flooding and Erosion

# Freeport Flooding

Impacts municipal infrastructure, homes, people

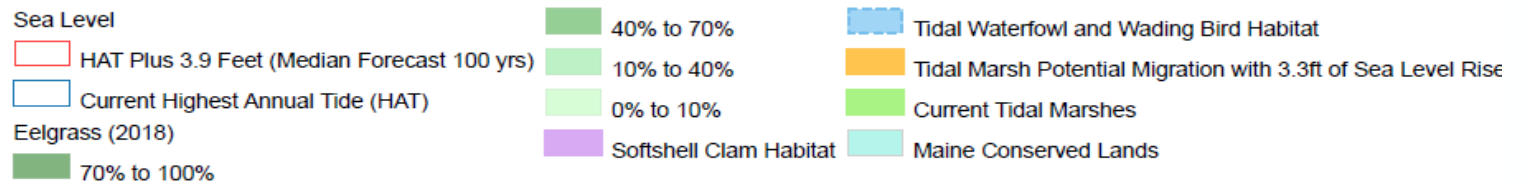
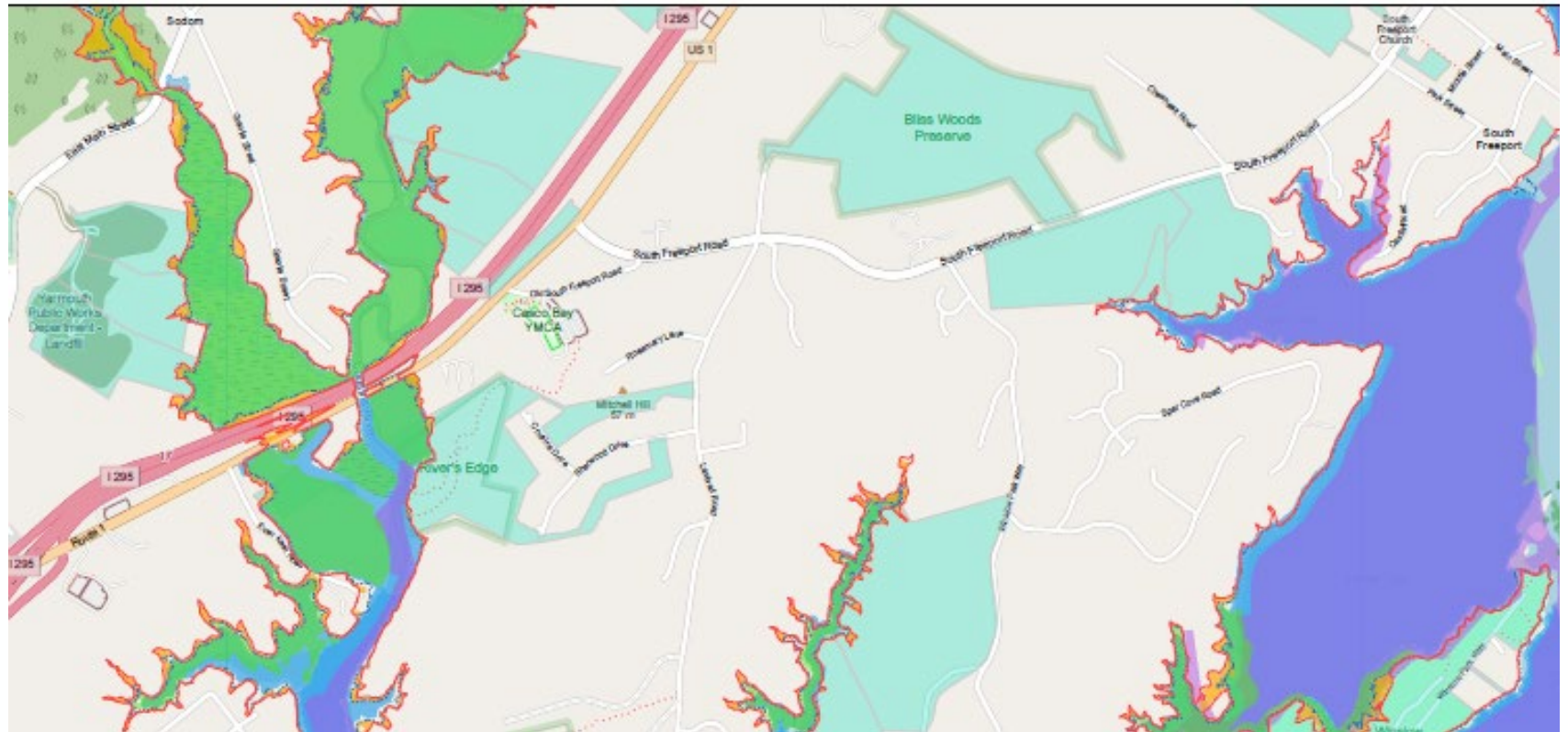
- 100-yr flood in 2050 - portions of over 100 roads will be flooded including parts of 295 and route 1
- Access to islands could be restricted
- Potential for neighborhoods to be cut off from access to services



# Freeport Ecosystems

## Key habitats and ecosystem resources at risk

- Tidal marshland migration constrained
- Eelgrass beds impacted by sea level rise and water quality
- Shellfish habitat and aquaculture viability



# Freeport Social Vulnerabilities

Not everyone will experience the impacts of climate change equally

**17.6%**

Residents 65 years and older who live alone

**55.0%**

of housing stock is older than 1980



**12.7%**  
homeowners who are cost burdened

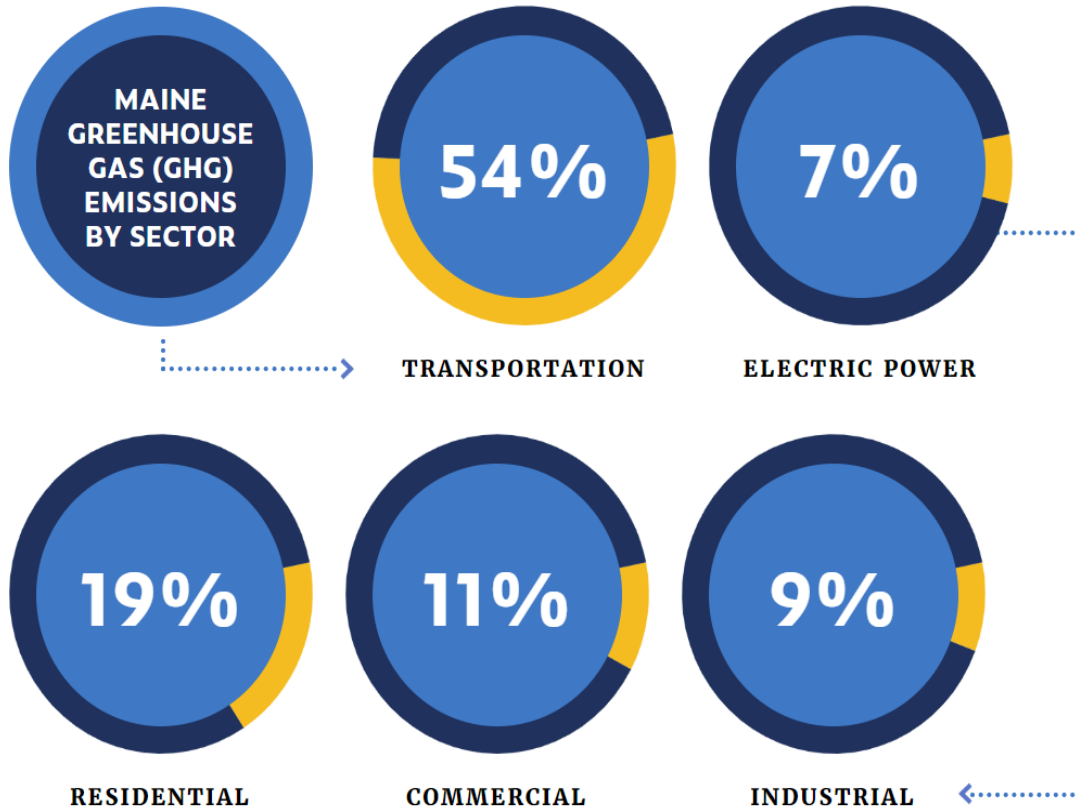


**45.3%**  
Renters who are cost burdened

Cost burdened households are those who spend 30% or more of their income on home or rental costs

# State and Freeport Emissions

## State Greenhouse Gas Inventory



## Freeport Emissions Data

- 4.2% of total emission in Cumberland County (2.8% of population)
- Estimated 16.6 Metric Tons of CO<sub>2</sub>e per household (4<sup>th</sup> highest in the county)

**3**

**Service Provider Activities**

# ENROLLMENT PROCESS



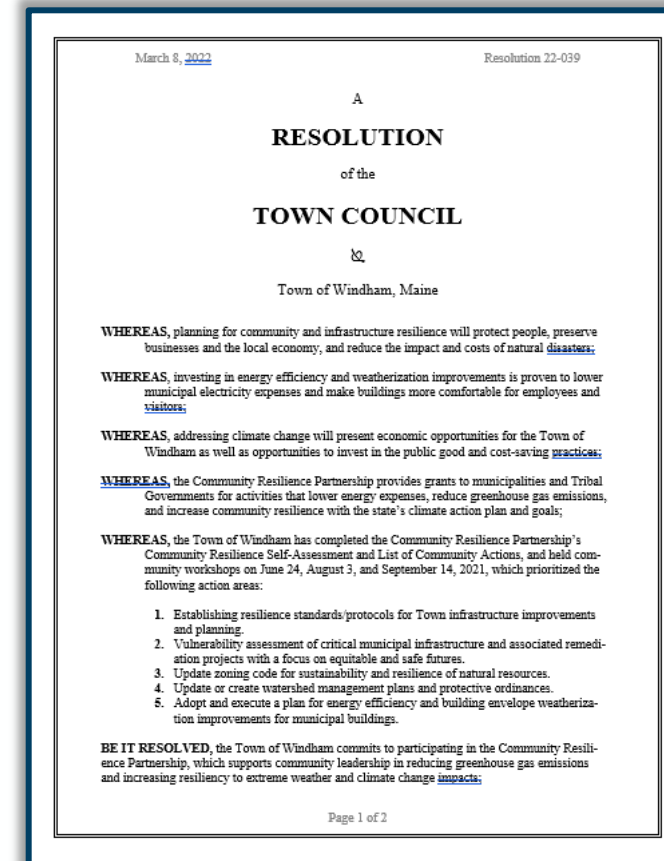
1. Municipal Resolution
2. Self-Evaluation and List of Community Actions
3. Overview of projects completed to date



# Municipal Resolution

## Resolution needs to be passed by mid-September

- Identifies priority action areas (high level)
- Names existing staff or committee to support planning, implementation
- Optional language citing climate hazards and impacts



# Self-Evaluation and List of Community Actions

## Sets baseline conditions and provides information on projects completed to date

**Community Resilience Partnership**

Program Contact: Brian Ambrette  
brian.ambrette@maine.gov  
[Community Resilience Partnership | Office of Policy Innovation & Future \(maine.gov\)](#)

**Community Resilience Self-Evaluation**

**Instructions:** This tool is intended to help organize your community's approach to increasing resilience to natural hazards and climate change impacts. Answer the questions to the best of your knowledge and seek information from your colleagues in municipal and county government and organizations in your community. Provide any relevant information in the explanation field. If it is difficult to give a clear yes or no response to a question, use the explanation field to explain why. **There are no wrong answers and the responses here will not affect your community's eligibility to receive grants.** Where the response to a question is no, that may indicate an area of opportunity to address through a Community Action Grant.

<b>Community name:</b>	Bridgton
<b>Self-Evaluation responses provided by:</b> Please include contact info	Linda LaCroix, Director of Economic Development llaCroix@bridgtonmaine.org
<b>Date:</b>	April 25, 2022
<b>Was this evaluation discussed during a community workshop?</b> Include the date of the workshop.	No, this specific self-evaluation was not discussed during a community workshop, however we are gathering responses to such questions through interactions related to the update of our Comprehensive Plan.

Once the questions on the following pages are complete, use these prompts to identify potential next steps for your community:

<b>What are two things your community is doing well?</b>	Expanding critical infrastructure (e.g. wastewater, streetscapes) which has spurred an influx of new businesses and younger folks to our area; Supporting our service organizations through line items and the Community Development Block Grant program.
<b>What are two areas that could be improved in the short-term?</b>	Enhancing community engagement – bringing more folks into leadership roles and creating communication channels to increase our reach especially on impactful decision making; Developing a robust response to the increase in issues impacting the disadvantage exacerbated by the pandemic, to include mental health services, affordable housing, and job training.
<b>What is important for your community to address in the long-term?</b>	Broadband town-wide is most critical – it is the basic platform for the community to be able to access educational, medical, business opportunities and other key factors of well-being; Developing the mechanisms mentioned above to uplift our disadvantaged community.

Revised December 1, 2021 Page 1

Community Resilience Partnership List of Community Actions Revised December 1, 2021		
	Strategy Areas & Actions	Additional Resources (\$=funding source)
<b>Strategy Area A: Embrace the Future of Transportation</b>		
<b>Accelerate the Transition to Electric Vehicles (EVs)</b>		
	A1 Purchase or lease electric vehicles for municipal or tribal government-owned vehicle fleets. (Grants capped at \$2,000 per light duty EV.)	<a href="#">Efficiency Maine: Municipal EV rebates (\$)</a>
	A2 Install EV chargers in public parking areas.	<a href="#">Efficiency Maine: EV supply equipment initiative (\$)</a>
	A3 Adopt ordinances to encourage EV charging infrastructure, including at multifamily dwellings, businesses, and public parking areas.	<a href="#">Municipal Electric Vehicle Readiness Toolkit (Southern Maine Planning and Development Commission)</a>
	A4 Adopt an anti-idling ordinance.	<a href="#">Example: Bar Harbor Municipal Code</a>
<b>Improve Mobility and Reduce Vehicle Miles Traveled (VMT)</b>		
	A5 Implement strategies that increase public transit ridership and alternative transportation modes, including bike and walking infrastructure.	
	A6 Implement strategies that encourage municipal/tribal employees to commute via carpools, public transit, bike/walk, or other alternatives to single-occupancy vehicles.	
	A7 Adopt a telework policy for municipal/tribal government staff positions that can work remotely some days per week.	
	A8 Adopt land use and development policies in plans and codes that reduce the need for driving (e.g. locating schools, workplaces, and shopping near where people live; encouraging density of development near housing and transportation).	
	A9 Adopt a Complete Streets policy which addresses safety, bike/pedestrian uses, and transit.	<a href="#">Maine DOT Complete Streets</a>
	A10 Adopt a broadband plan that reduces the need to drive by increasing access to high speed internet for underserved residents to support telecommuting, access to remote education and telehealth.	<a href="#">Connect Maine planning and infrastructure grants (\$)</a>
<b>Strategy Area B: Modernize Maine's Buildings</b>		
<b>Transition to Cleaner Heating and Cooling, and Efficient Appliances in Municipal/Tribal Buildings</b>		
	B1 Adopt and execute a plan for energy efficiency and building envelope weatherization improvements for municipal/tribal buildings. Collaborate with	<a href="#">Efficiency Maine: Public Sector (\$)</a>

# FREEPORT KEY IMPACTS



**Self-Evaluation Highlights**



Flooding from Harraseeket River



Inundation from sea level rise and storm surge



Degradation of infrastructure due to extreme storms and increased heat



# PROGRESS TO DATE



## Self-Evaluation Highlights



Key ordinances and plans to target flooding impacts



Opportunities to include climate risk - Comprehensive Plan update and Climate Action Plan



Developing local emergency management plan



# Projects Completed To-Date

Energy Innovation  
and Carbon  
Dividend Act of  
2021

Bonds for bike and  
pedestrian ways

Solar regulations

Hybrid fleet  
vehicles

Building and  
energy codes

Complete Streets  
Policy

Preservation of  
open space

Municipal Tree  
Task Force

Municipal building  
system upgrades

Lowered parking  
requirements

Zoning  
amendments  
Shoreland and  
Timber Harvesting

# Priority Action Areas for Consideration

- Improve Municipal Buildings – Building efficiency and electrification
- Create a climate change education, outreach, and engagement program
- Integrate climate considerations into local emergency management plan
- Share a full-time Sustainability Coordinator with Yarmouth – co-develop a Climate Action Plan
- Set targets to protect and conserve green space
- Reduce the vehicle miles traveled in the community through increase in transit and bike/pedestrian improvements
- Standardize assessment of climate considerations into project evaluation

**4**

**Questions/Discussion**

# Instructions

## In person

- Review materials around the room
- Vote for your top priority area using provided stickers

## Virtual

- Review materials sent via chat on zoom
- Complete online survey to rank priority areas



## NEXT STEPS

- Municipal staff and committees work to scope out project
- Application for funding due Sept. 20th

