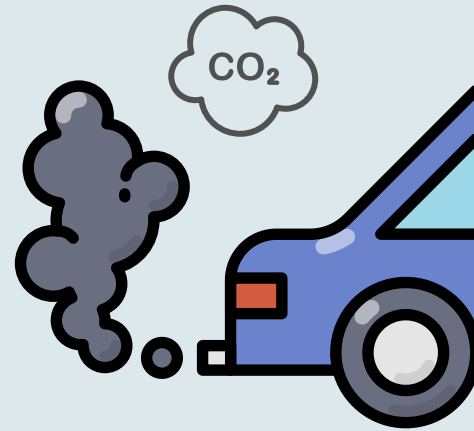


# Maine's Transportation Emissions

## *What's Included in the Transportation Sector?*

The Transportation sector encompasses the movement of people and goods by car, truck, train, ship, aircraft, and other vehicles.



## *How Does Transportation Impact Climate Change?*

Transportation is responsible for

**54%**

of Maine's annual Greenhouse Gas Emissions

*Increasing GHG emissions results in rising temperatures, sea-level rise and other climate-related hazards*



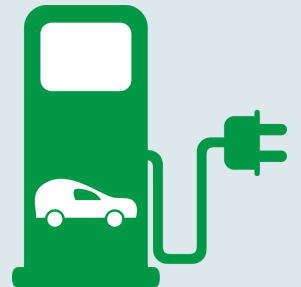
Human activities are causing unprecedented challenges associated with climate change - particularly the combustion of fossil fuels, which emits carbon dioxide (CO<sub>2</sub>) and other greenhouse gases.

## Freeport Transportation Emissions in 2020

**56,812** Metric Tons of CO<sub>2</sub>e

**4.2%**

of total emissions in Cumberland County



**GPCOG**  
GREATER PORTLAND  
COUNCIL OF GOVERNMENTS

# Maine's Transportation Emissions

## How to Take Action

Step 1: Complete an Emissions Inventory

Step 2: Reduce Vehicle Miles Traveled (VMTs)

Step 3: Transition Municipal Fleets to Electric and Encourage Wide-Spread Adoption of EVs



## Identify & Inventory Emissions

### What's an Emissions Inventory?

An emissions inventory lists the quantity of air pollutants discharged into the air over a specified period of time, grouped by the source of the pollutants

*Emissions: Carbon dioxide (CO<sub>2</sub>), methane (CH<sub>4</sub>) and nitrous oxide (N<sub>2</sub>O)*

### Type of Emissions



Scope 1 Emissions: **Directly** created (e.g., through household heating or vehicle fuel combustion) by community members



Scope 2 Emissions: **Indirectly** created (e.g., through grid electricity use) by community members

## Reduce VMTs

Adopt policies, programs and regulatory changes that promote public transit, biking, and walking (e.g., complete streets)



Build infrastructure to encourage transit ridership (bus shelters, benches, etc.)



## Transition to Electric

Transition existing public transit and municipal fleet vehicles with electric vehicles

**59%**

of Maine's transportation emissions are from light-duty passenger cars and trucks

*(The remaining 27% are from medium- and heavy-duty trucks, and the remaining 14% come from rail, marine, aviation, and utility equipment vehicles).*

### Municipal EV Toolkit

