

Application For Automobile Graveyard and/or Junkyard Permit

MUNICIPAL OFFICE USE ONLY

Tentative Date of Hearing 9-5-23 Application Received 8/24/23
Time of Hearing Permit No.
Place of Hearing Fee Paid \$..... 50.00

Notifications sent by Date

To the City/Town Freeport County Cumberland Maine
I/We D.A.B. hereby

make application (in quadruplicate) for a permit to establish, operate or maintain an Automobile Graveyard and/or Junkyard at the following described location and in accordance with the provisions of Title 30-A, Sections 3751 to 3760.

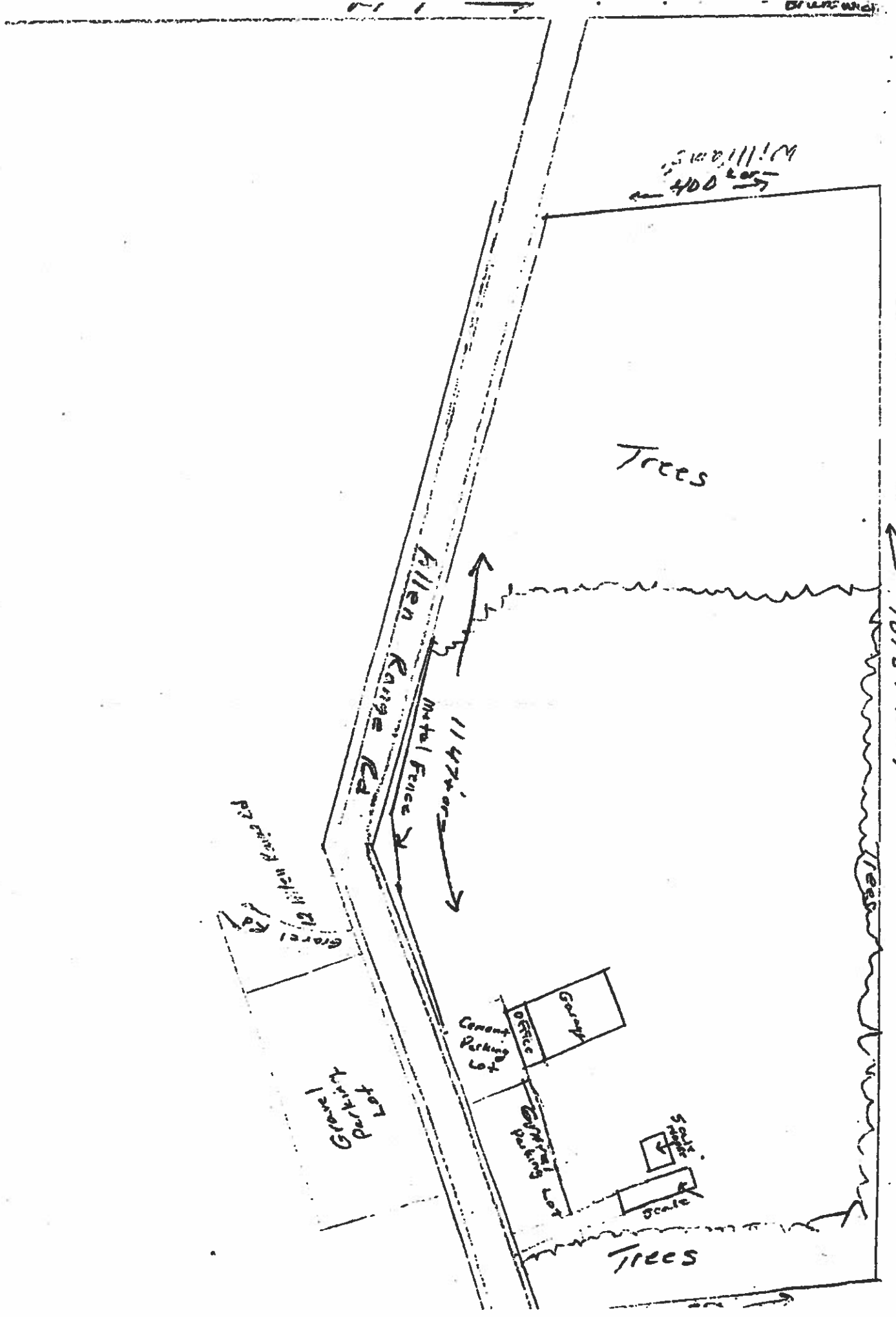
Answer all questions in full.

1. Give location of Automobile Graveyard and/or Junkyard 13 Allen Range Road
2. Is this application made by or for a company - partnership (corporation) individual?
3. Is this property leased? Property owned by David Baldus / D.A.B. Inc.
Address: 242 Hollis Rd. Hollis, Me. 04042 / 13 Allen Range Rd. Freeport, Me.
4. Name and address of person or entity who will operate the site David Baldus
242 Hollis Rd. Hollis, Me. 04042
5. Legal status/capacity of site operator (e.g. individual, partnership (corporation) Corporation
6. How is "yard" screened? — Fence? (Type) metal Height 6' Trees? (Type) Hard wood
Embankment? Gully? Hill? Other?
7. How far is edge of "yard" from center of highway? 50 Feet.
8. Can junk be seen from any part of highway? Yes No
9. Was Junkyard Law, Requirements and Fees explained to you? Yes No
10. Is any portion of this "yard" on public property? Yes No
11. Is "yard" within 300 feet of, or ordinary view from, a Public Building, Public Park, Public Playground, Public Bathing Beach, School, Church or Cemetery?
Yes No
12. When was "yard" established? 1965 By whom? Beebe
13. When was last permit issued? 2022 To whom? David A. Baldus
14. Each application for an automobile graveyard and/or junkyard permit *must* be accompanied by a detailed site plan containing the following information.

- (a) Property boundary lines;
- (b) A description of the soils on the property;
- (c) The location of any sand and gravel aquifer recharge areas;

One Copy of Application to City/Town
One Copy of Application to Applicant
One Copy of Application to State Police, Augusta
One Copy of Application to Bureau of Motor Vehicles

(over)



400' 1/2
←

Trees

Allen Range Rd
Metal Fence
114 ft

10/8 + or -
→

Gravel Rd
Gravel

Gravel Parking Lot

Concrete Parking Lot

Gravel

Gravel Parking Lot

Scale
Scale

Trees
→

CERTIFICATION

I/We David Bolduc
hereby certify that in the calendar year 2022/3 we complied in full
with Chapter 8, Article II, A of the Freeport Zoning Ordinance as follows:

“Upon receiving a motor vehicle, all junkyards and automobile graveyards shall remove the battery, the engine lubricants, transmission fluid, brake fluid and engine coolant, and shall recycle or dispose of the battery and all such fluids according to all applicable Federal and State laws regarding disposal of waste oil and hazardous materials.”



Signature of Owner

STATE OF MAINE
CUMBERLAND, ss

Then personally appeared the above-named David Bolduc
on this 24 day of Aug, 2023 and acknowledged the above
statement to be true.



Signature of Notary Public

I/We David A. Bolduc / D.A.B. Inc hereby certify that the following is a complete description of all automobiles received at this yard.

YEAR	MAKE/MODEL	VEHICLE ID NUMBER	COLOR
2004	Chevy Silverado	2GCEK19T741200550	Black
2004	chevy Silverado	1GCEK14T742259144	Black
2004	chevy Silverado	2GCEK19V741355441	Silver
2004	chevy Silverado	1GECK14V04E112267	Blue
2005	Chevy Silverado	2GCEK19B551341108	white
2005	Chevy Silverado	2GCEK19B551374895	white
2005	chevy Silverado	1GCEK19T85E139032	Green
2005	Chevy Silverado	2GCEK19T551342832	Silver
2005	Chevy Silverado	1GCHK24U65E163686	white
2005	Chevy Silverado	2GCEK19B851166417	Black
2006	chevy Silverado	1GCHK23U76F254394	white
2006	Chevy Silverado	1GCEK19V16Z182295	Red
2006	Chevy Silverado	1GCEK14V06E135731	Blue
2007	Chevy Silverado	1GBJK34687E525694	Black
2007	Chevy Silverado	1GCEK14X17Z129087	Blue
2008	chevy Silverado	2GCEK13J581264681	Blue
2008	chevy Silverado	2GCEK19J981272192	Silver
2010	chevy Silverado	3GCRKREA9A6266539	white
2003	Chevy K1500S	2GCEK19V631146674	Blue
2004	Chevy K1500S	2GCEK19T941149262	Green
2004	Chevy K1500S	2GCEK19T94 1GFNK16T64J146048	Silver
2004	Chevy K1500S	3GNFK16T64G205794	White
2005	Chevy K1500S	3GNFK16Z25613473	white
2005	Chevy C1500S	1GCEK14V95Z180395	Black
2005	Chevy K1500T	1GNEK13T65J126996	Blue
2006	Chevy K1500S	2GCEK19B161350017	Red
2007	Chevy K1500S	1GCEK14V37E185718	Black

YEAR	MAKE/MODEL	VEHICLE ID NUMBER	COLOR
1998	Chevy K2500S	1GN6K26R7WJ370351	Black
1999	Chevy K2500S	1GCGK24V8XE202521	Blue
2000	Chevy K3500	1GCHK34F84F520565	White
2001	Chevy K2500H	1GCHK29V61E313251	Blue
2003	Chevy K2500H	1GCHK29V83E192483	Blue
2005	Chevy C2500H	1GCHC24V25E118600	Black
2000	Chevy K3500	1GBHK33R94F498494	White
2000	Chevy K3500	1GCHK34R94R152101	Silver
2003	Chevy S10	1GCDT13X93K149961	Red
2003	Chevy S10	1GCCS14H838104500	Black
2004	Chevy S10	1GCDT13X64K123500	Red
2005	GMC Savana	1GDJG31U251237492	White
2006	GMC Savana	1GKFG15T061247718	Blue
2001	Chevy Suburban	3GNFK16T21G231871	Silver
2002	Chevy Suburban	3GNFK16Z12G349285	Black
2001	GMC TR	1GJH639R411138176	Green
2006	GMC TR	1GTFH15T961105313	Black
2003	GMC Sierra	1GTEC14T93E335434	Red
2004	GMC Sierra	2GTEK19V841385287	Tan
2004	GMC Sierra	2GTEK19V041285989	Black
2005	GMC Sierra	1GTEC14X35Z247235	Black
2005	GMC Sierra	1GDHK24U25E138862	White
2006	GMC Sierra	1GTEC14X06Z289072	Maroon
2006	GMC Sierra	1GTEK19B76E147731	Black
2008	GMC Sierra	1GTEK14J578Z274070	Black
2008	GMC Sierra	1GTEK14X98Z205014	Blue
2012	GMC Sierra	1GTR2VE75CZ220464	White
2013	GMC Sierra	1GTR2WE76DZ314694	White

YEAR	MAKE/MODEL	VEHICLE ID NUMBER	COLOR
2000	GMC Jimmy	1GKDT13W6Y2349750	Silver
2001	GMC Jimmy	1GKDT13W612208652	Silver
2001	GMC Jimmy	1GKDT13W312170166	Black
2002	GMC Denali	1GKFK66U42J129247	Black
2002	GMC Denali	1GKFK66UX2J239252	Black
2002	GMC Envoy	1GKDT13S622366732	White
2003	GMC Envoy	1GKDT13S932303142	Silver
2004	GMC Envoy	1GKDT13S442430219	White
2005	GMC Envoy	1GKDT13S052251502	Black
2002	GMC Senoma	1GTDT19W728253987	White
2003	GMC Senoma	1GTCS19X838231330	White
2003	GMC Senoma	1GTCS14H238246843	Tan
2004	Chevy TrailBlazer	1GN0T13S442132463	Black
2004	Chevy Trailblazer	1GN0T13SX42152994	Maroon
2005	Chevy Trailblazer	1GN0T13S452267723	Black
2005	Chevy Trailblazer	1GN0T13S052107211	Silver
2006	Chevy Trailblazer	1GN0T13S862177296	Red
2007	Chevy Trailblazer	1GN0T13S972275027	Black
2007	Chevy Trailblazer	1GN0T13S972181052	Black
2008	Chevy Trailblazer	1GN0T13S982171011	Red
2010	GMC Terrain	2CTACEW4A6239680	Silver
2011	GMC Terrain	2CTFLREC7B6302750	Black
2012	GMC Terrain	2GKFLVEK5C6211798	Tan
2012	GMC Terrain	2GKFLREK3C6102490	Silver
2005	Chevy Equinox	2CNDL73F456137552	Silver
2005	Chevy Equinox	2CNDL73F156038414	White
2006	Chevy Equinox	2CNDL73F366110408	Silver
2007	Chevy Equinox	2CNDL23F676010100	Black

I/We David A. Bolduc / D.A.B. INC. hereby certify that the following is a complete description of all automobiles received at this yard.

YEAR	MAKE/MODEL	VEHICLE ID NUMBER	COLOR
2004	Ford F-150	2FTRX18W84CA30752	Red
2004	Ford F-150	1FTRF12W64NC31183	Green
2004	Ford F-150	1FTRF12W24KA52635	Red
2004	Ford F-150	1FTRF14W44NC47674	white
2004	Ford F-150	2FTRX17244CA86380	Red
2005	Ford F-150	1FTPW145X5KF03958	Green
2005	Ford F-150	1FTRX12W45NA51005	white
2005	Ford F-150	1FTRX12W25FA41339	Red
2005	Ford F-150	1FTPX14555FA80714	Red
2005	Ford F-150	1FTPW14555KF03334	Blue
2006	Ford F-150	1FTPW1456LKA66574	white
2006	Ford F-150	1FTRF12256NA06575	Green
2006	Ford F-150	1FTRF14W06NA57255	Black
2006	Ford F-150	1FTRF12226NA65373	Blue
2007	Ford F-150	1FTRF12297NA56395	Gray
2007	Ford F-150	1FTPW14517FA23836	Blue
2007	Ford F-150	1FTRF12267NA82632	white
2008	Ford F-150	1FTRW14W48FB90226	Gray
2008	Ford F-150	1FTPX14VX0FA01588	Green
2009	Ford F-150	1FTRF12W69KB24840	Red
2009	Ford F-150	1FTRF14W59KB90826	Red
2010	Ford F-150	1FTMF1CWYAKE09375	GRAY
2010	Ford F-150	1FTFW1EY4AKA18879	Silver
2010	Ford F-150	1FTMF1CWIAKB37573	Red
2011	Ford F-150	1FTMFIEM2BKD50710	Blue
2011	Ford F-150	1FTFW1ETXBF098994	Silver
2012	Ford F-150	1FTFW1EFICKD18004	Red

