



**TOWN OF FREEPORT, MAINE**  
Planning Department  
30 Main Street  
Freeport, ME 04032  
Phone: 207-865-4743  
[www.freeportmaine.com](http://www.freeportmaine.com)

**TO: FREEPORT TOWN COUNCIL**  
**FROM: CECILIA SMITH, ASSISTANT TOWN PLANNER**  
**RE: RESOLUTION FOR COMMUNITY RESILIENCE GRANT APPLICATION PROCESS**  
**DATE: TUESDAY, AUGUST 2<sup>ND</sup>, 2022**

**BACKGROUND:** The State of Maine’s Governor’s Office of Policy Innovation & Future (GOPIF) has developed a Community Resilience Partnership program “to assist communities to reduce carbon emissions, transition to clean energy, and become more resilient to climate change effects such as to extreme weather, flooding, rising sea levels, public health impacts, and more.” The program offers grant opportunities for Community Action Grants which can provide funding for a wide array of projects. The Community Action Grants have a \$5,000 minimum and \$50,000 maximum request amount for each municipality, and up to \$125,000 for collaborative proposals involving two or more communities. Projects listed under a *List of Community Actions* that align with the state climate action plan, Maine Won’t Wait, do not require local matching funds. However, please note that the *List of Community Actions* is quite broad and encompasses most sustainability-oriented projects.

(Link to program: <https://www.maine.gov/future/climate/community-resilience-partnership#:~:text=Through%20grants%20and%20direct%20support,levels%2C%20public%20health%20impacts%2C%20and>).

Through a Regional Service Provider Grant, the Greater Portland Council of Governments (GPCOG) has been providing the Town of Freeport assistance to enroll in the Community Resilience Partnership program. On June 22<sup>nd</sup>, GPCOG hosted a Community Resilience Workshop (see attached) to inform the public about the program, learn about the climate hazards and impacts to the Town of Freeport, and gather input from Freeport residents and committee members about which projects should be prioritized. GPCOG also conducted a survey to identify top sustainability-focused priority projects for Freeport. The three priority areas based on public and staff input are:

- 1) Support a new Sustainability Coordinator and development of a Freeport Climate Action Plan.
- 2) Improve Municipal Operations - Efficiency and Electrification. Provide equipment upgrades and efficiency improvements to priority buildings. Install EV chargers in municipal buildings to support future electrification of the municipal fleet.
- 3) Protect and conserve green space.

In order to enroll in the Community Resilience Partnership grant program, the Town of Freeport must pass a municipal resolution showing their commitment to efforts to address climate resiliency. On June 13<sup>th</sup>, 2022, the Freeport Sustainability Advisory Board (FSAB) reviewed and unanimously adopted a draft municipal resolution for the Town Council to review and consider for approval. While the Council may choose to revise and/or delete the wording in the document, there are three required statements that must be included for the purposes of the

grant enrollment process. These required statements are indicated with an \* below. Please note that the three priority action areas are underlined as they were added following the Community Resilience Workshop with public input after the Freeport Sustainability Advisory Board (FSAB) adopted draft municipal resolution. Thus, the draft municipal resolution language reads as follows:

\* **WHEREAS**, the Town of Freeport has completed the Community Resilience Partnership’s Community Resilience Self-Assessment and List of Community Actions, and held a community workshop on 6/22/22 which prioritized the following action areas:

- 1) Support a new Sustainability Coordinator and development of a Freeport Climate Action Plan.
- 2) Improve Municipal Operations - Efficiency and Electrification. Provide equipment upgrades and efficiency improvements to priority buildings. Install EV chargers in municipal buildings to support future electrification of the municipal fleet.
- 3) Protect and conserve green space.

**WHEREAS**, the Town of Freeport experiences flooding, intense storms, drought, high heat emergencies, and other natural hazards and seeks to better prepare for future conditions;

**WHEREAS**, planning for community and infrastructure resilience will protect people, preserve businesses and the local economy, and reduce the impact and costs of natural disasters;

**WHEREAS**, investing in energy efficiency and weatherization improvements is proven to lower municipal electricity expenses and make buildings more comfortable for employees and visitors;

**WHEREAS**, transitioning municipal fleet vehicles to electric vehicles lowers fuel and maintenance costs and reduces the uncertainty of variable fuel prices on municipal budgets;

**WHEREAS**, the Gulf of Maine is warming 99% faster than other oceans around the world, and ocean acidification and warming ocean temperatures pose a serious economic and cultural risk to Maine maritime industries, heritage, and tourism;

**WHEREAS**, shifting seasonal temperature and precipitation patterns threaten local natural ecosystems, economic activity such as agriculture, tourism and outdoor recreation, including winter sports and other outdoor activities, and public health due to increased incidence of heat-related illness and tick-borne illnesses such as Lyme disease;

**WHEREAS**, the Town of Freeport is prepared to reduce energy use and greenhouse gas emissions, and increase the resilience of people, infrastructure, and businesses;

**WHEREAS**, addressing climate change will present economic opportunities for the Town of Freeport as well as opportunities to invest in the public good and cost-saving practices;

**WHEREAS**, the State of Maine’s four-year climate action plan, *Maine Won’t Wait*, seeks to put Maine on a trajectory to decrease greenhouse gas emissions 45% by 2030 and 80% by 2050, and achieve carbon neutrality by 2045;

**WHEREAS**, achieving these emissions and resilience goals will require Maine to act with urgency to slow the causes of climate change and prepare people, communities, and the environment for climate-related impacts to come;

**WHEREAS**, the Community Resilience Partnership provides grants to municipalities and Tribal Governments for activities that lower energy expenses, reduce greenhouse gas emissions, and increase community resilience in alignment with the state’s climate action plan and goals;

**\* BE IT RESOLVED**, the Town of Freeport commits to participating in the Community Resilience Partnership, which supports community leadership in reducing greenhouse gas emissions and increasing resiliency to extreme weather and climate change impacts;

**\* BE IT FURTHER RESOLVED**, the Town of Freeport designates Caroline Pelletier, Town Planner, to coordinate planning, implementation, and monitoring of energy and resilience projects and to be the primary point of contact to the Community Resilience Partnership.

**Come Share Your Big Ideas for a More Sustainable Freeport!**

# **COMMUNITY RESILIENCE WORKSHOP**

**In the workshop we will :**

- Learn about the climate hazards and impacts facing Freeport
- Hear about priority projects that will help the town be more resilient
- Give input on which projects should be prioritized for funding

**JUNE 22 | 6:00-8:00 P.M.**

**HYBRID MEETING**

**TOWN HALL CHAMBERS**

**30 Main St, Freeport and VIRTUAL**

To attend, scan the QR code or go to  
<https://us02web.zoom.us/j/84250166568>

**Note: there may be Board members from various municipal boards and/or committees at this meeting, such as, members of the Town Council, Planning Board, Project Review Board, Complete Streets and the Sustainability Advisory Board along with others.**

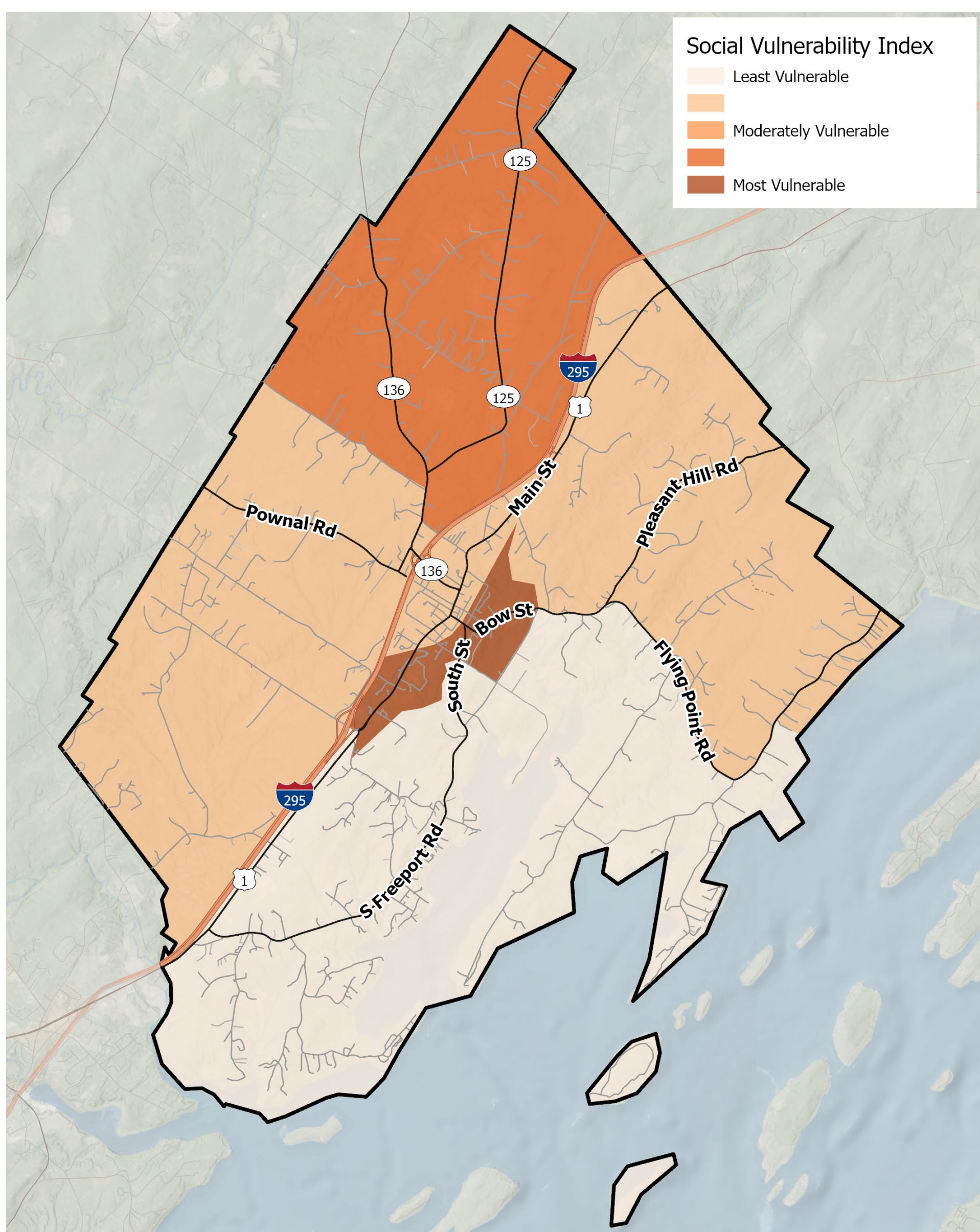


# Social Vulnerabilities

Certain people and groups are more vulnerable to the impacts of climate change than others. This means people in the same town may experience climate change differently. Examples of vulnerabilities that increase risk:

- **Age and health** affect the ability to control body temperature and maintain a healthy immune system, which make older and younger populations more prone to health-related climate impacts.
- **Race and ethnicity** are strongly correlated with disparities in health, exposure to environmental pollution, and vulnerability to natural hazards.
- People **living below the poverty line** or somewhere **unaffordable** have less money and time to prepare for climate change or deal with climate disasters.

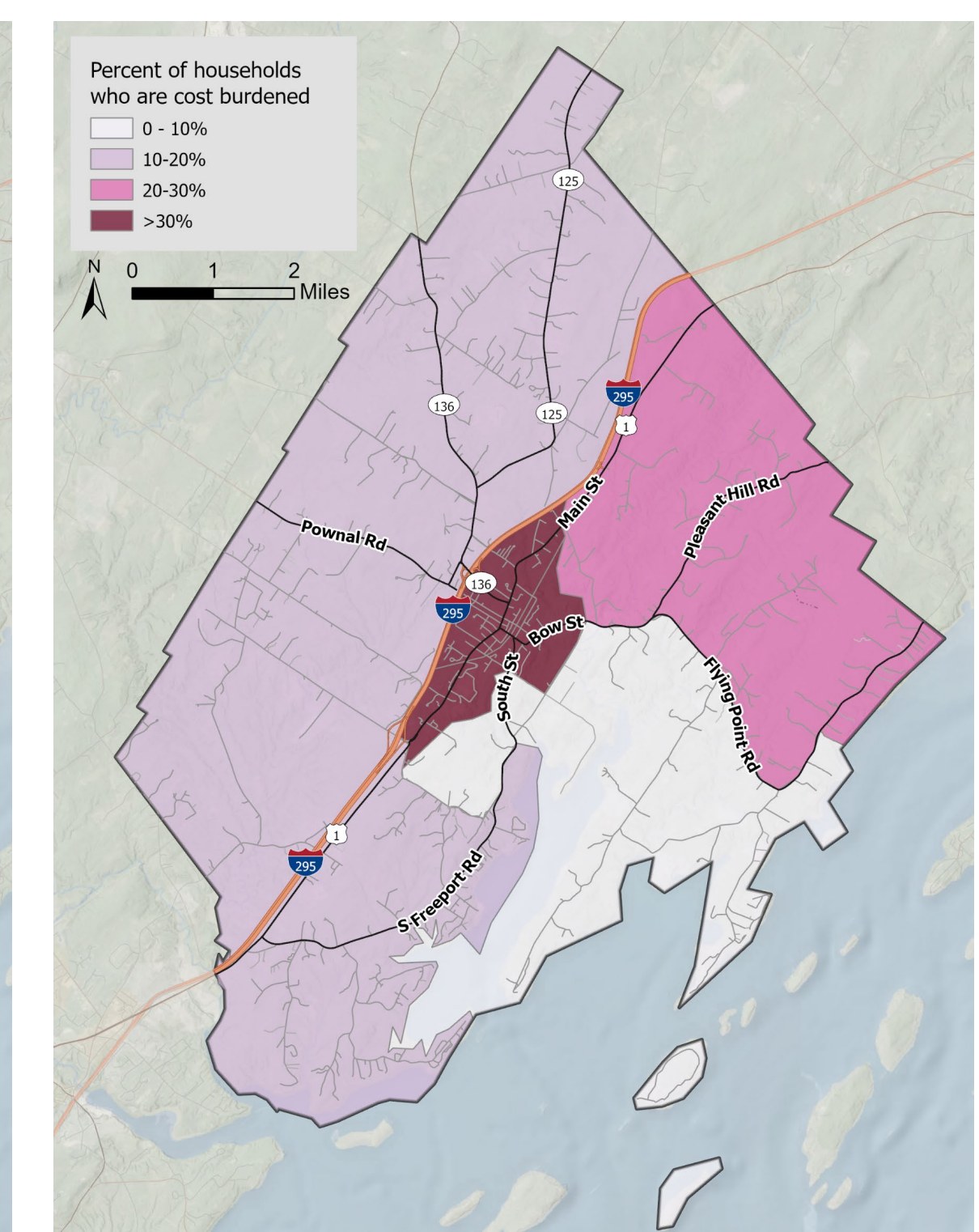
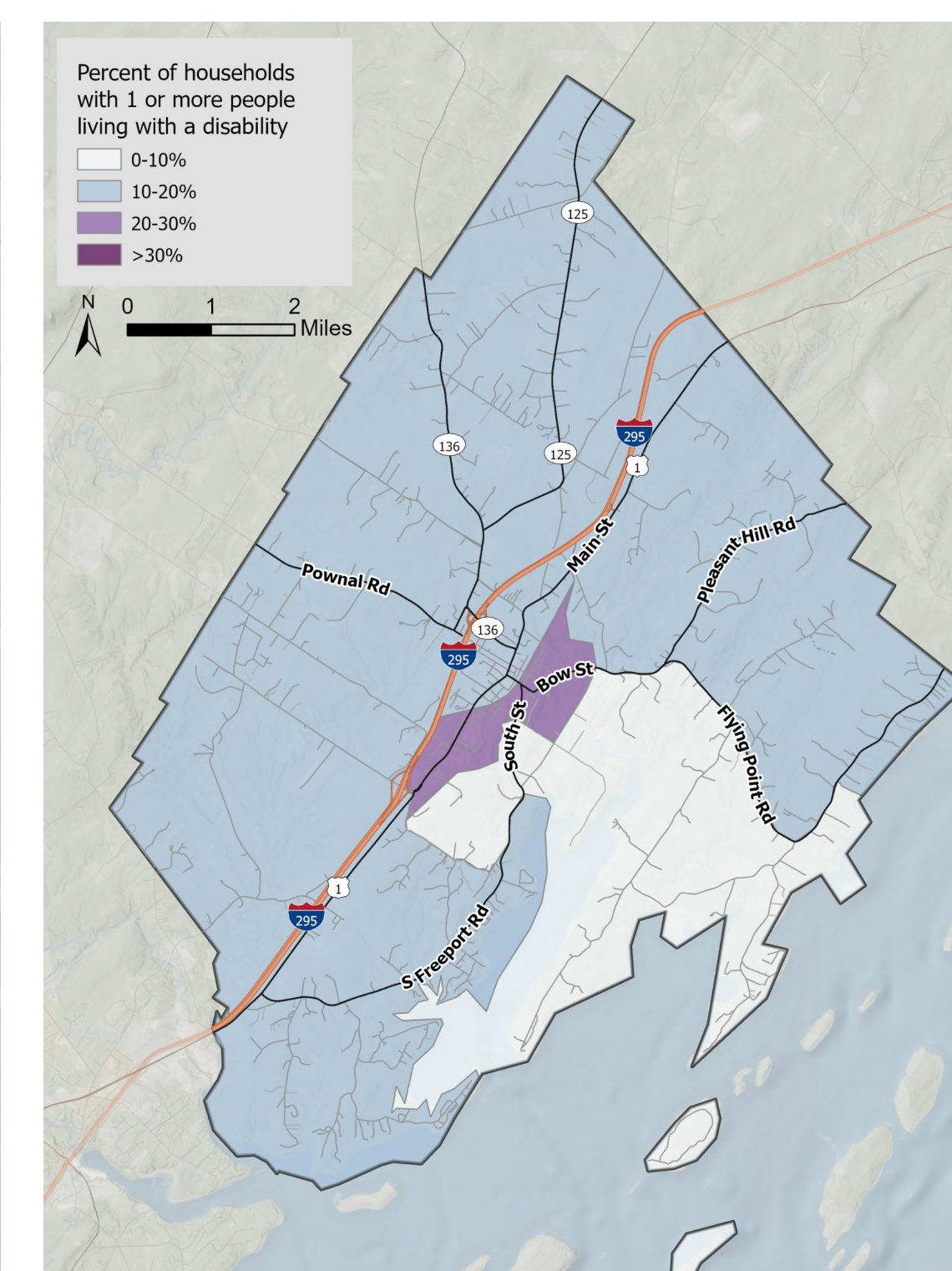
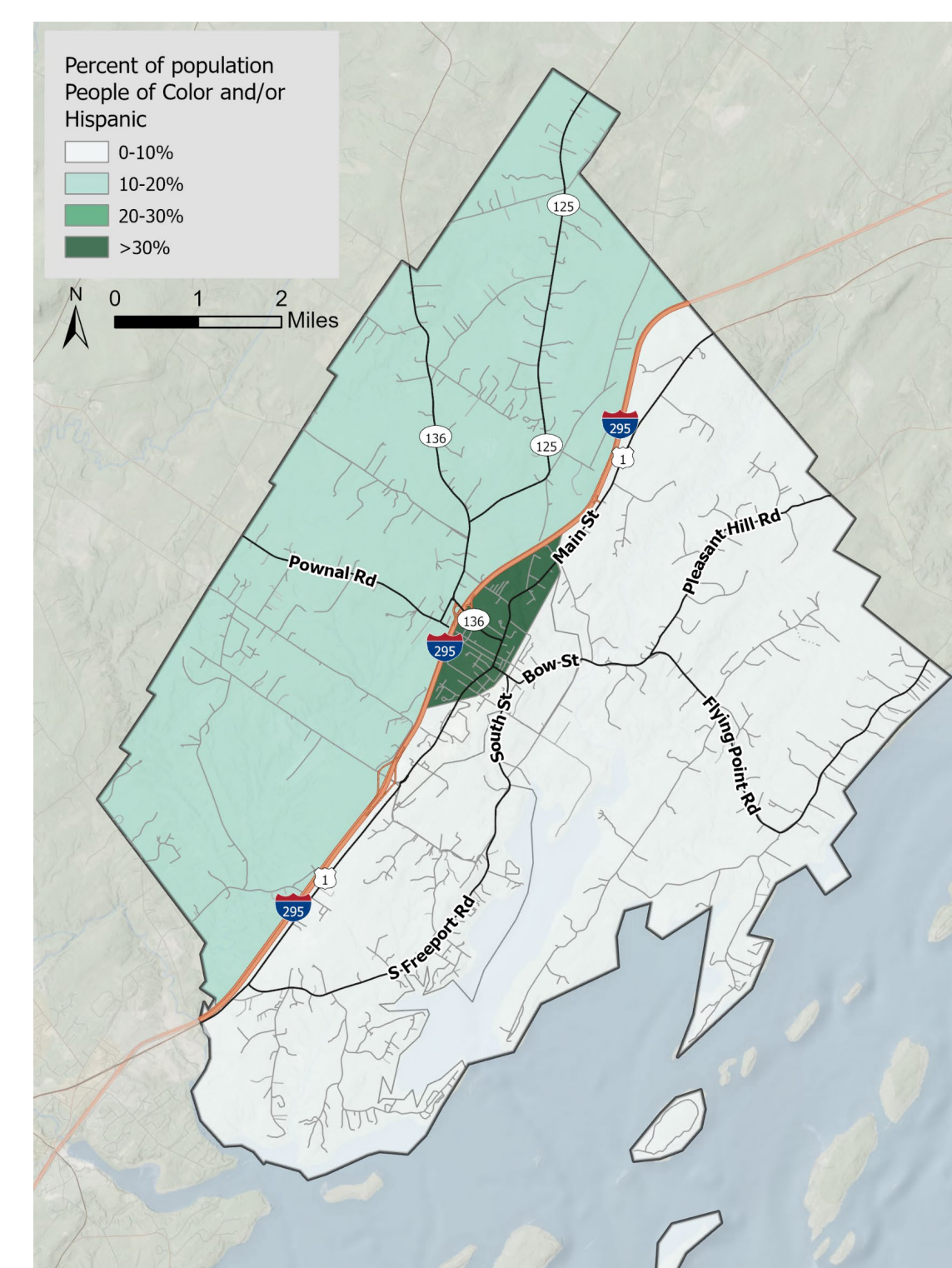
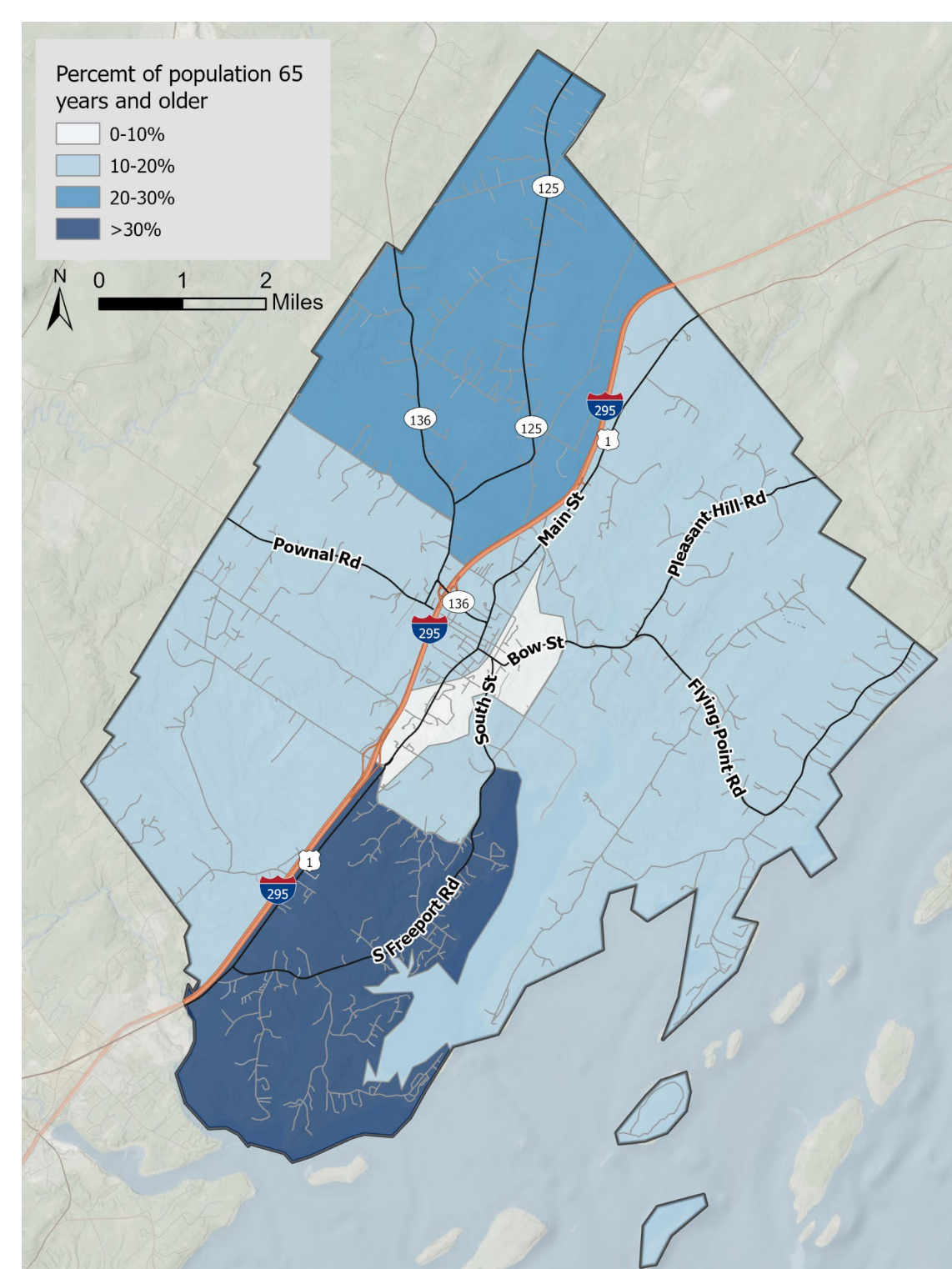
**Reducing social vulnerabilities creates healthier, more resilient communities**



**8,517**  
Total Population

**4,165** total  
Housing Units

Household Composition and Disability		Housing and Transportation	
Aged 65+	21.7%	Mobile Homes	6.0%
Aged 65+ and Living Alone	17.6%	Older Housing	55.0%
Aged 18 or younger	21.3%	No Vehicle	1.5%
Living with a Disability	6.8%	No Internet	4.3%
Socioeconomic		Renters	22.1%
Below Poverty	3.5%	Cost Burdened	19.3%
Unemployed	3.4%	Minority Status	
Self-employed	8.3%	Minority	8.7%
Natural Resource occupation	1.4%	Limited English Speaking Household	0.0%
Median Income	\$89,484		



**12.7%**  
homeowners who are cost burdened



**45.3%**  
Renters who are cost burdened

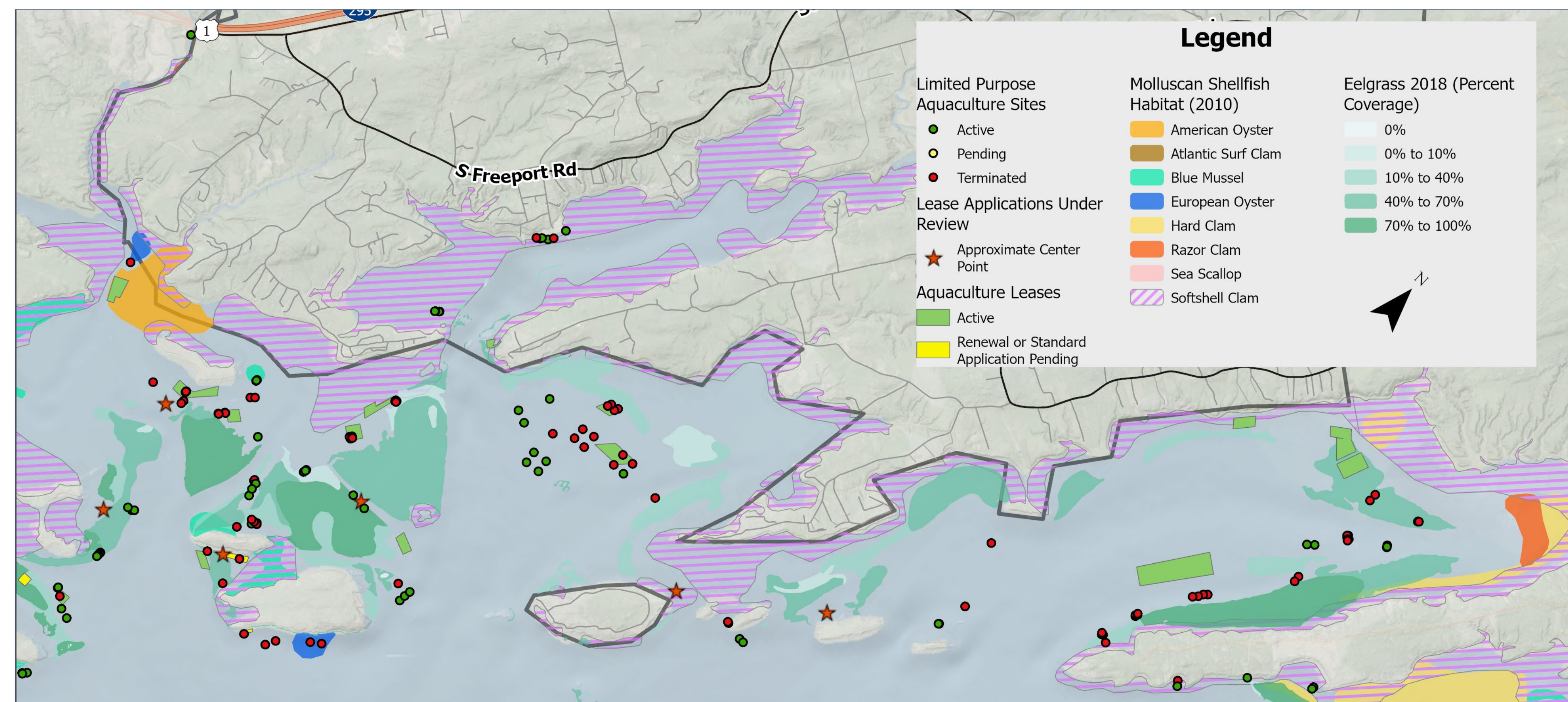
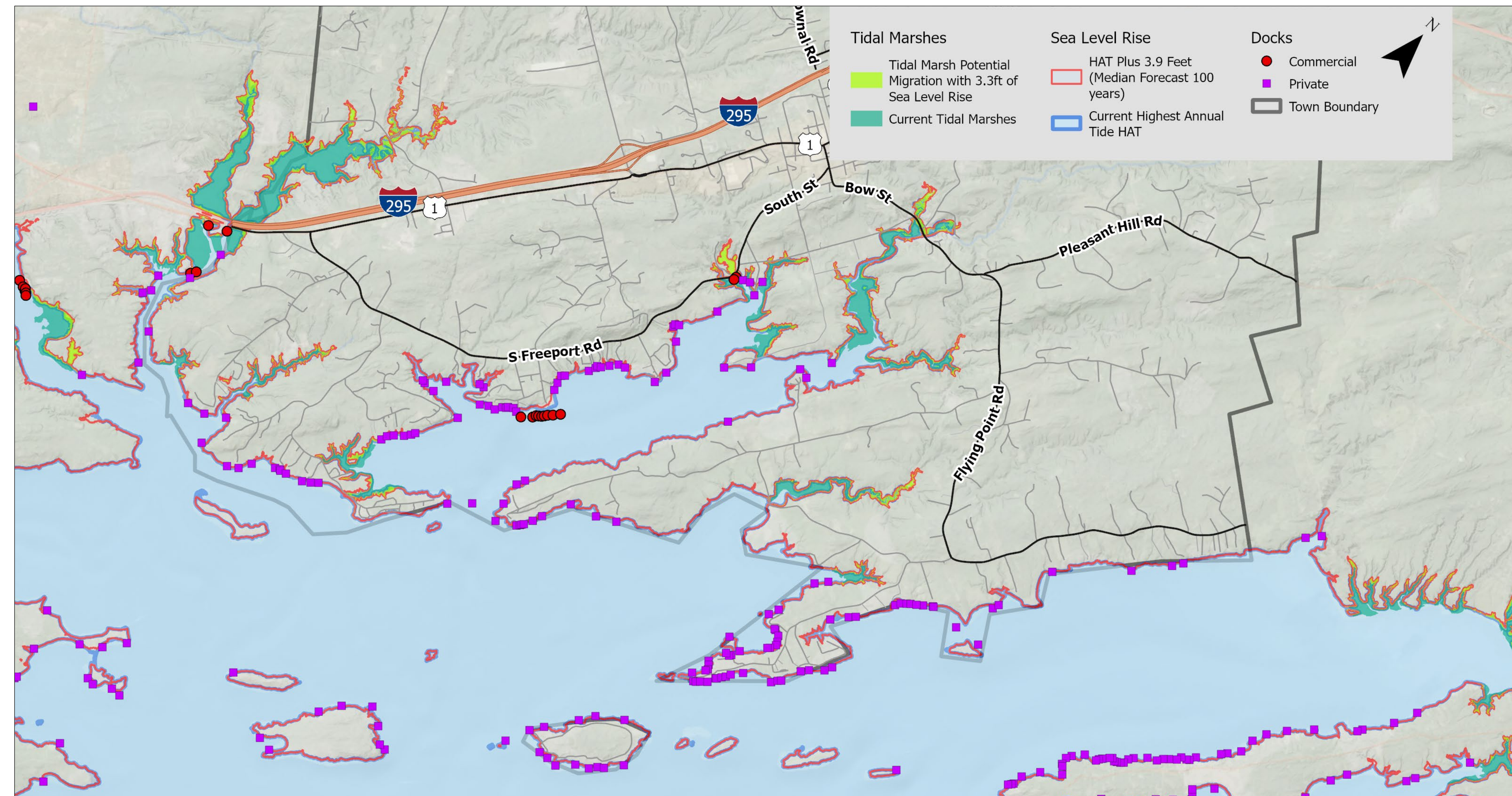
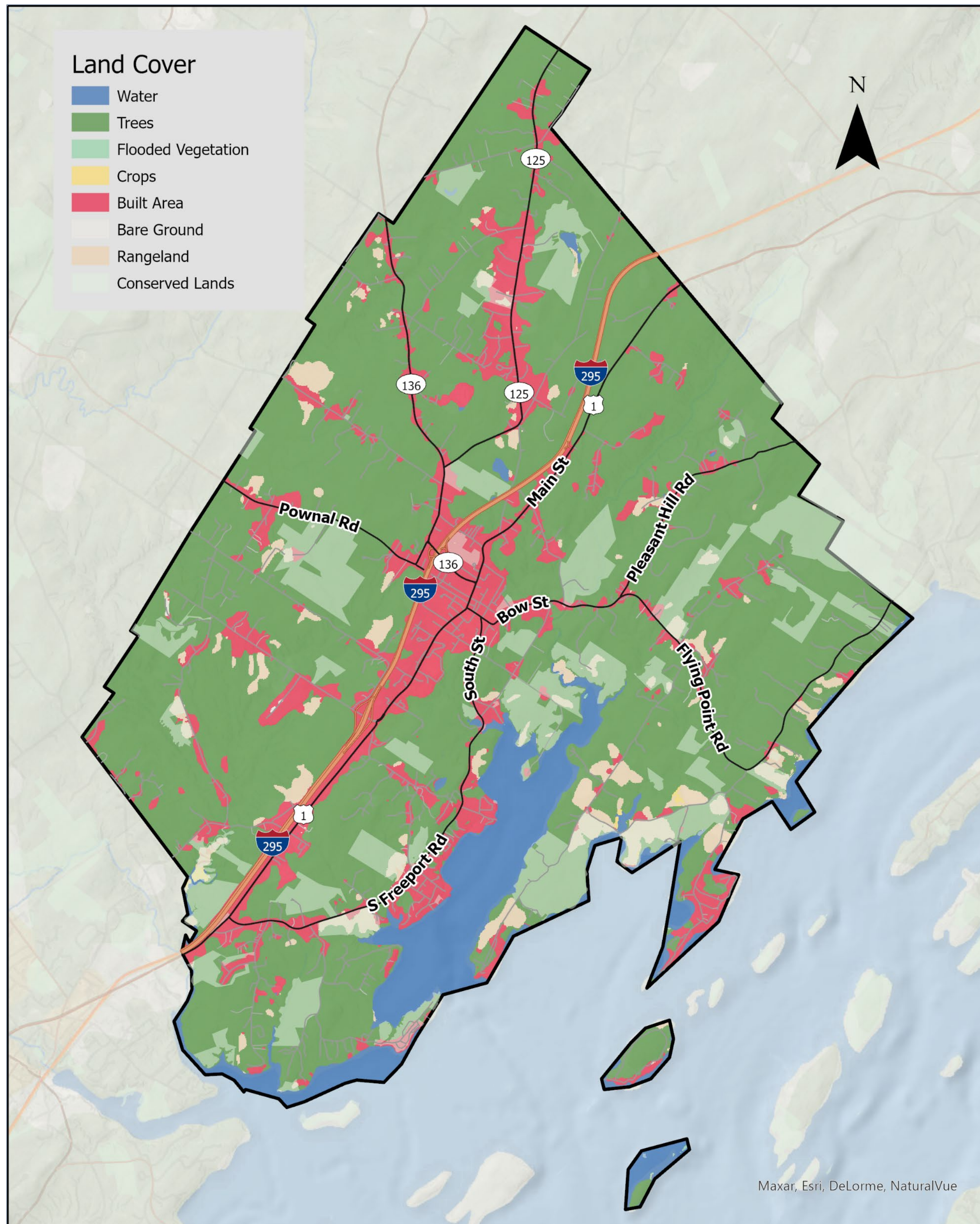
**17.6%**  
Residents 65 years and older who live alone

Data source: 2020 ACS 5-year estimates

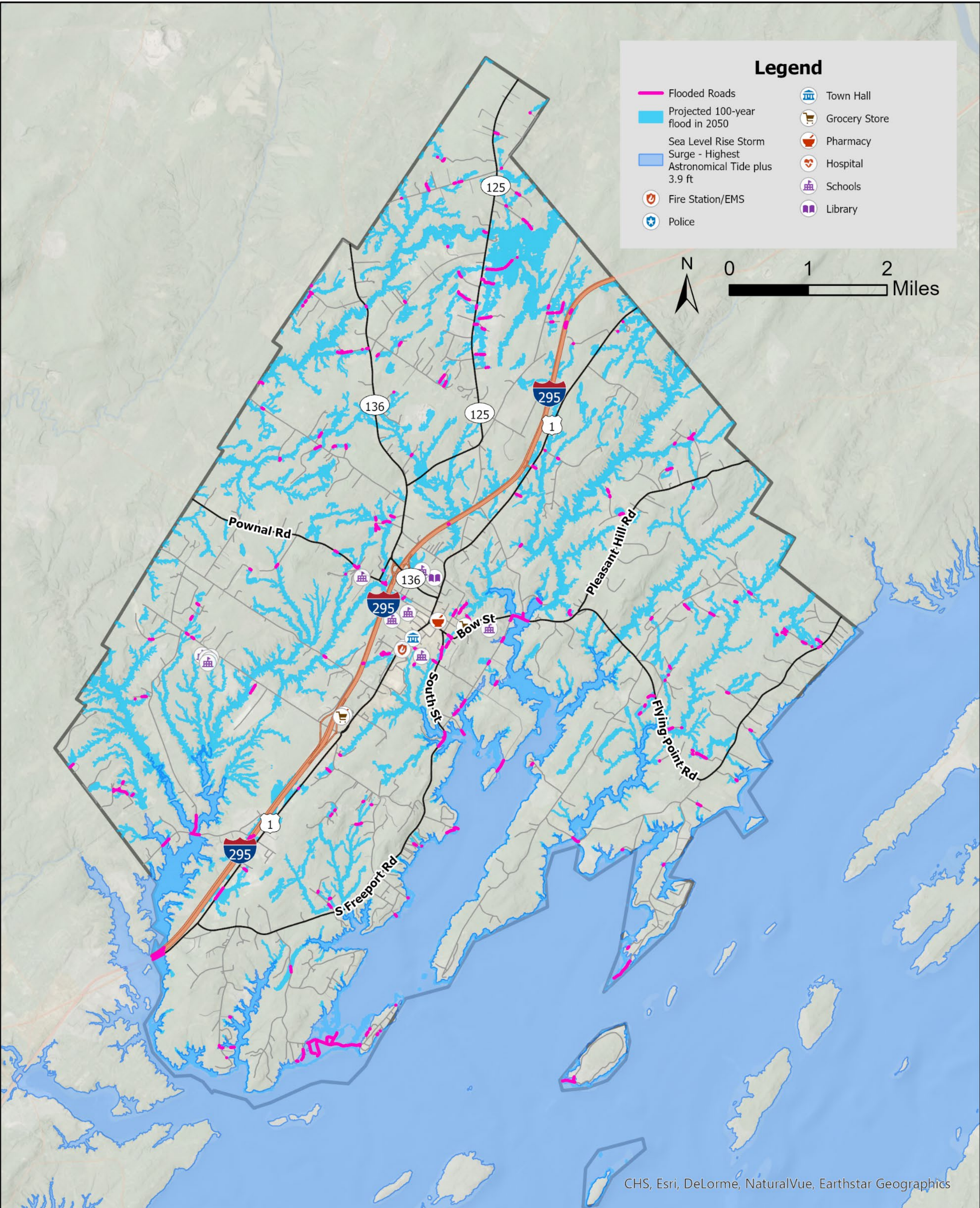
Cost burdened households are those who spend 30% or more of their income on home or rental costs

# Ecosystem Vulnerabilities

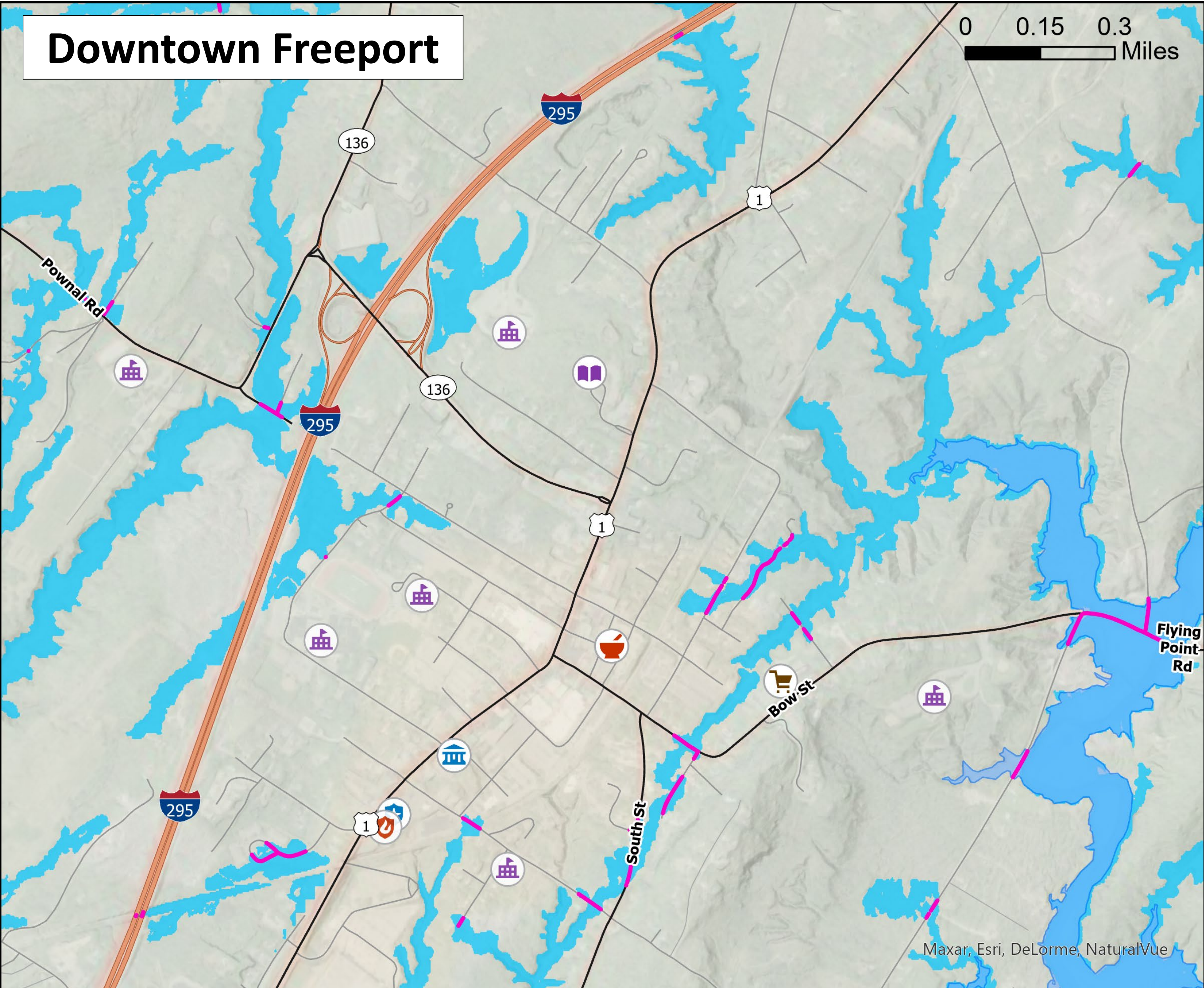
Ecosystems support wildlife, filter air and water, and play a vital role in maintaining a healthy community and vibrant economy. Climate change, particularly sea level rise, poses a risk to these delicate habitats. Understanding environmental vulnerabilities will help protect these key resources.



# Infrastructure Vulnerabilities



Flooding from sea level rise and increased precipitation are a major impact from climate change. Within Freeport, several roads and bridges are vulnerable to flooding. In addition to flooding, the changing temperatures will decrease the lifespan of pavement. Higher temperatures cause pavement to soften, expand, or buckle, while freeze-thaw cycles increase cracking in the pavement. This may impact emergency responses, travel to critical resources or isolate communities.



A winter landscape featuring a snow-covered road that recedes into the distance. The road is flanked by bare trees, and the sun is shining brightly from behind the trees in the background, creating a lens flare effect. The overall scene is serene and cold.

# Community Resilience Partnership

## Freeport Community Workshop



# AGENDA



1. Community Resilience Partnership
2. Climate Hazards and Impacts
3. Enrollment Materials
4. Overview of priority action areas
5. Questions, Open House, Voting

1

# Community Resilience Partnership

# Community Resilience Partnership

Leverage state support for municipal climate action

Grants awarded for:

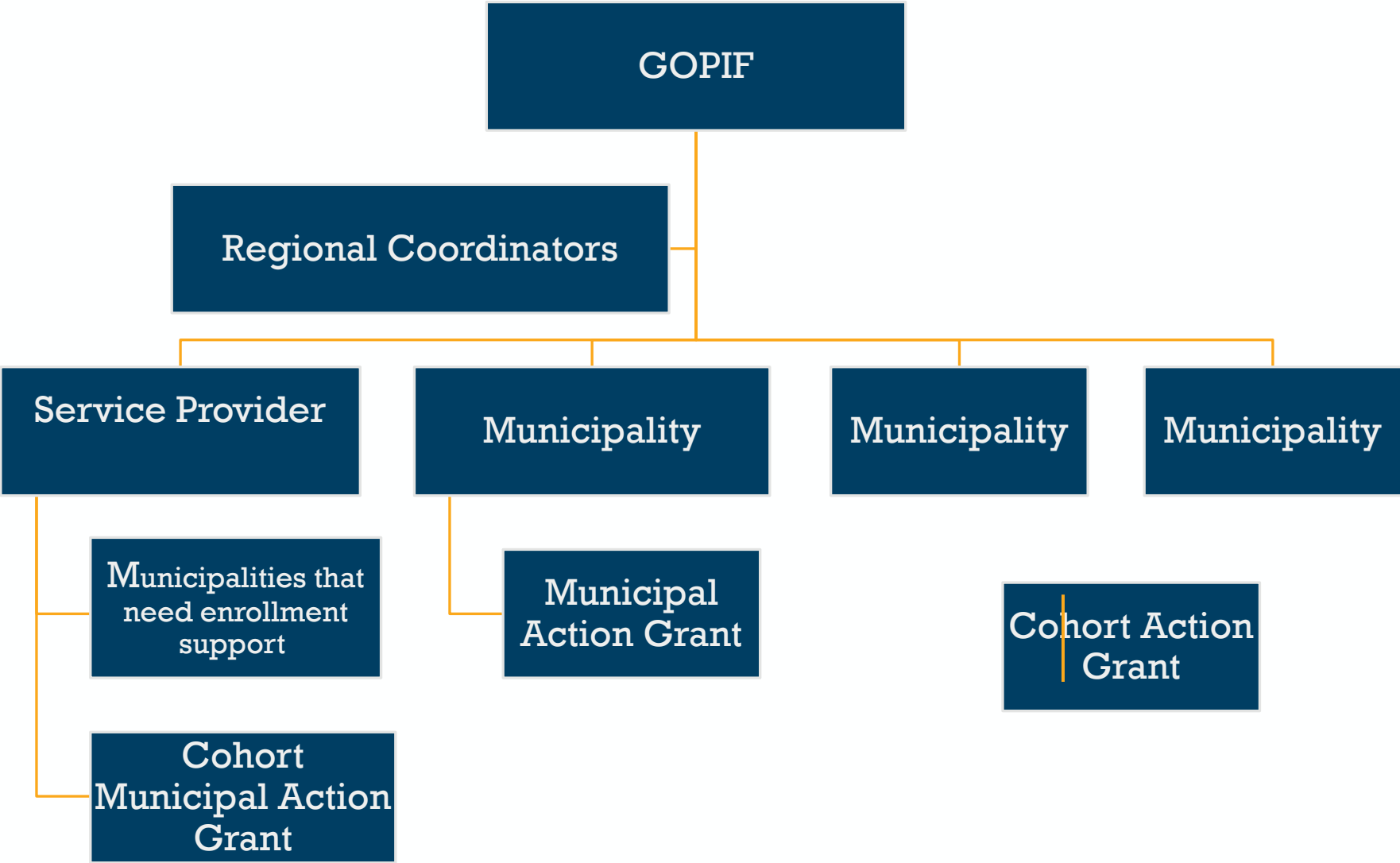
- Service Provider
- Community Action Grants



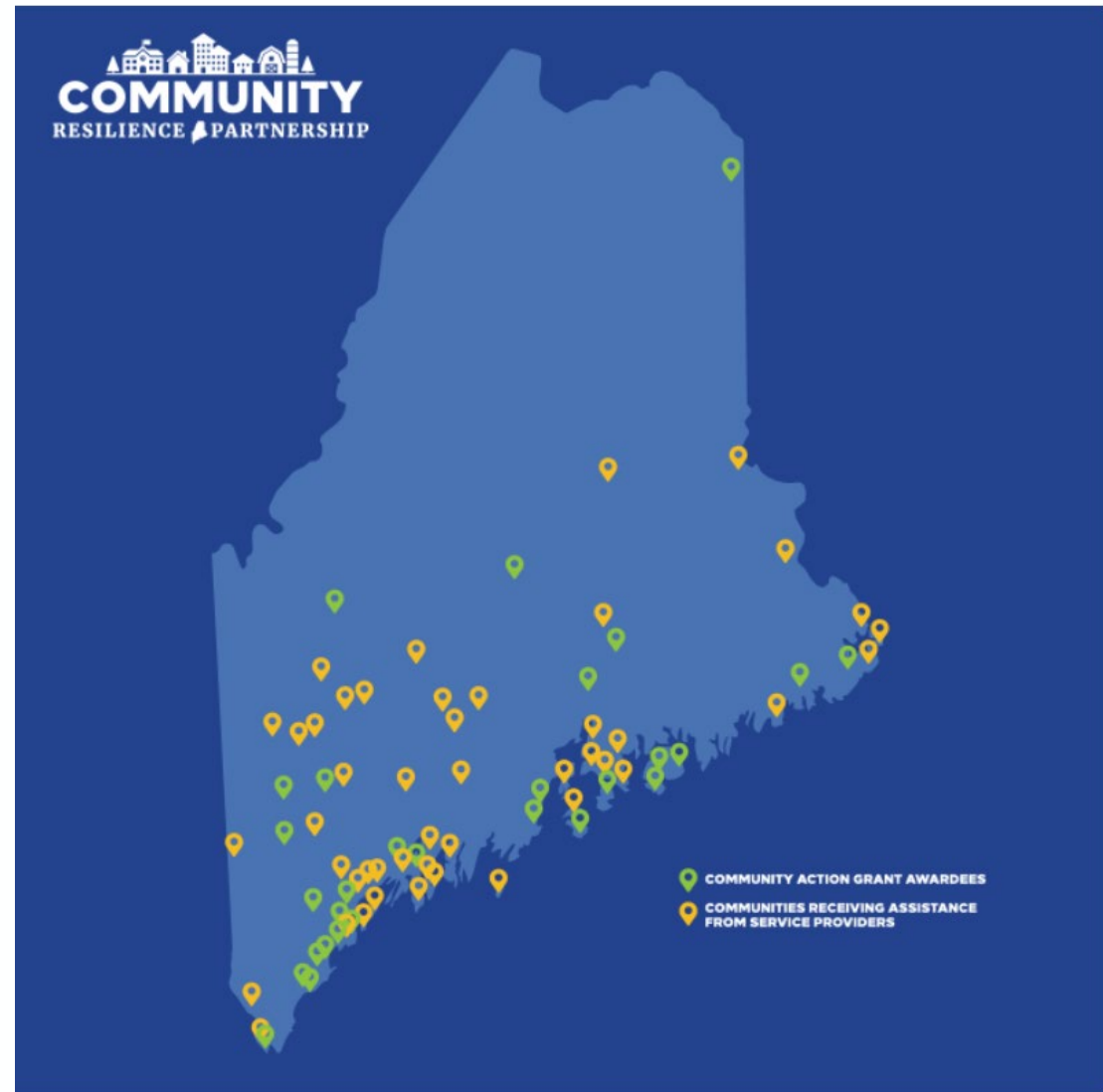
GOVERNOR'S OFFICE OF  
Policy Innovation  
and the Future



# GOPIF Community Resilience Partnership Grants



# COMMUNITY ACTION GRANTS



Up to \$50,000 per community

# CRP AWARDS IN THE REGION



## Community Action Grants

- Windham: Town Energy Plan
- Bridgton: Open Space Plan
- Portland: Climate Resiliency Zoning
- South Portland: Street Design

## Climate Action Plans

- Portland/South Portland
- Cumberland
- Falmouth

## SERVICE PROVIDER GOALS



# Outcomes of this process for your town:

- Enrollment in partnership and access to funding
- Community engagement and prioritization of initial climate resilience and clean energy actions
- Apply for community action grant in September

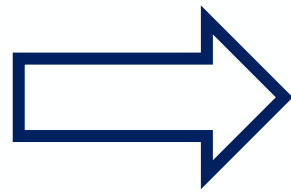
# 2

## Climate Hazards and Impacts

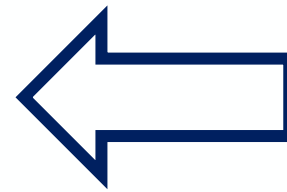


# Definitions

Climate Hazards



Climate Impacts



Social Vulnerabilities



# Maine Climate Hazards and Impacts

Maine is experiencing an increase in local climate hazards NOW

## Climate Hazards

## Potential Impacts

Sea Level Rise

Coastal Erosion

Coastal Flooding

Changing Ecosystems

Ocean Warming and Acidification

Changing Marine Ecosystems

Harm to Fishing Industry

Increased Precipitation and Storm Intensity

Coastal and Inland Flooding

Overburdened Wastewater System

Declining Water Quality

Warming, More Variable Temperatures

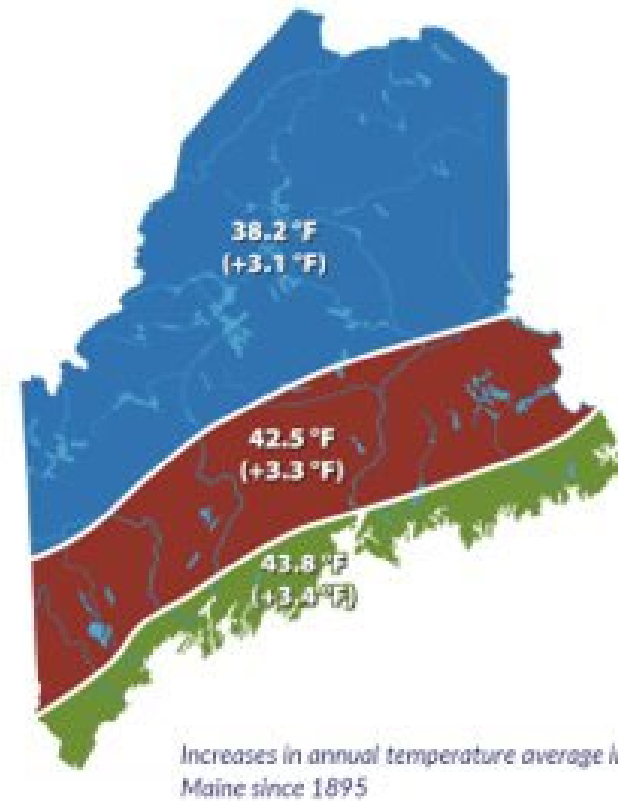
Increased Energy Consumption for Summer Cooling

Increase in Vector-borne Diseases

Changing Terrestrial Ecosystems



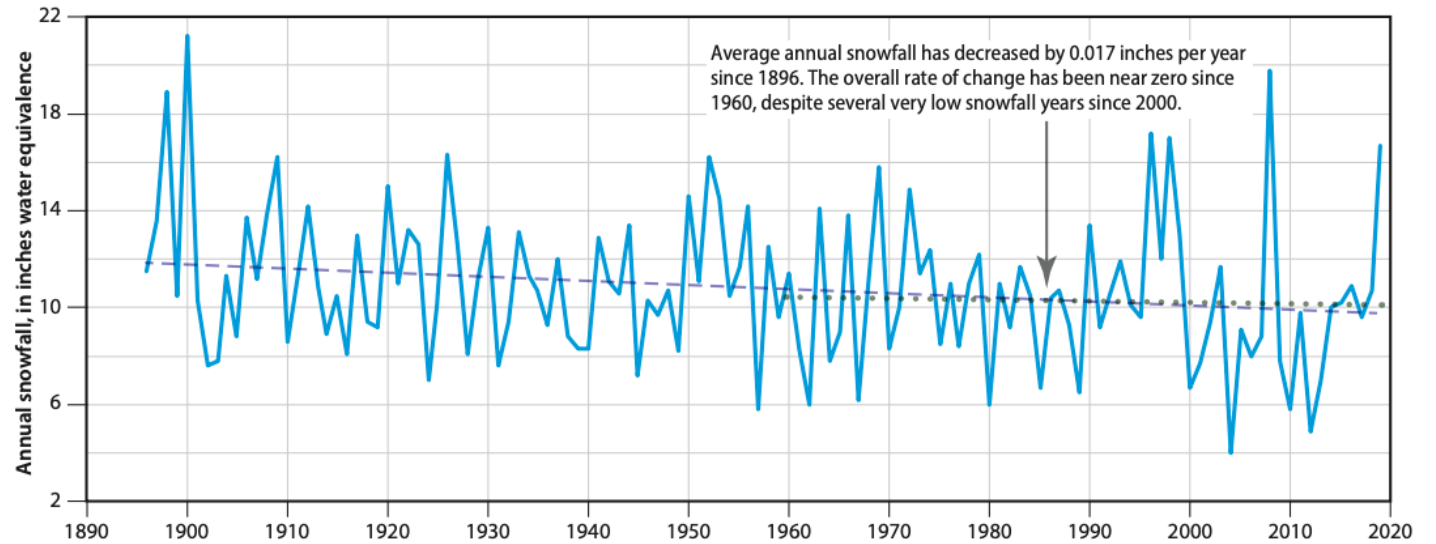
# WARMER, MORE VARIABLE TEMPERATURES



- State has warmed more than 3°F since 1895
- Maine can expect 36 high heat days (over 90°F) per year by 2100, compared to one per year on average from 1971 to 2000

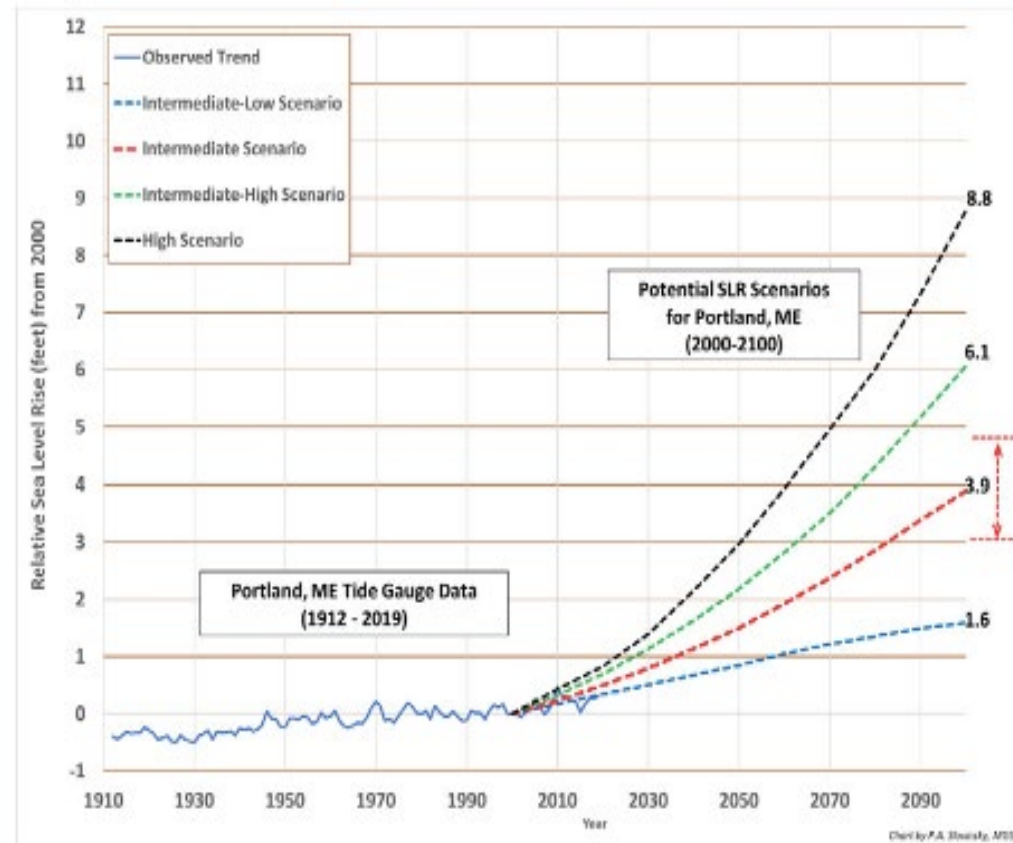
# CHANGING PRECIPITATION

Maine Annual Snowfall, 1896–2019



- Average yearly precipitation in Maine increased by 15% since 1895 and
- Anticipated additional 5% increase in precipitation by 2050
- Likely increase intensity and variability of precipitation
- Likely change in type of precipitation

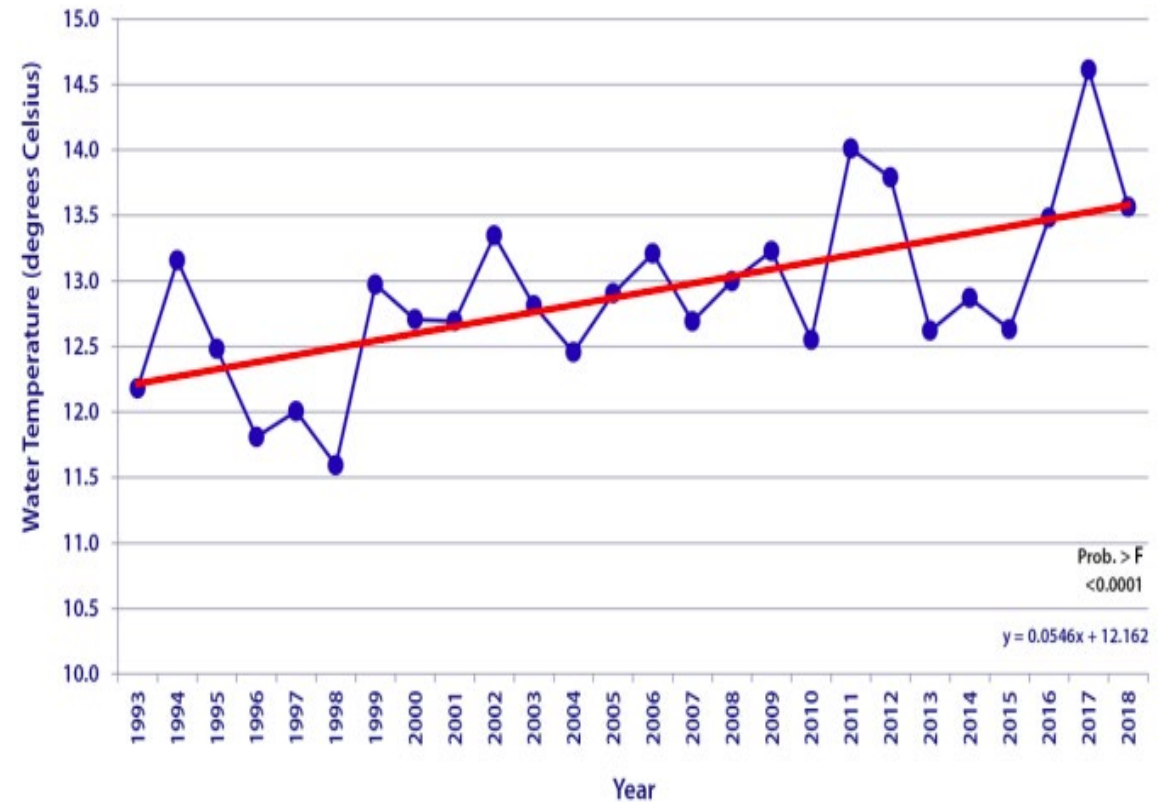
# SEA LEVEL RISE



- Sea levels have risen 7.5” inches since 1912
- Range of sea level rise scenarios depend on many complex factors
- State planning for estimated 1.5 ft increase in sea level rise at 2050, possibility of 3.6ft
- Potential for 15-20x more flooding days by 2100

# OCEAN WARMING AND ACIDIFICATION

Warming Temperatures in Casco Bay (1993 – 2018)

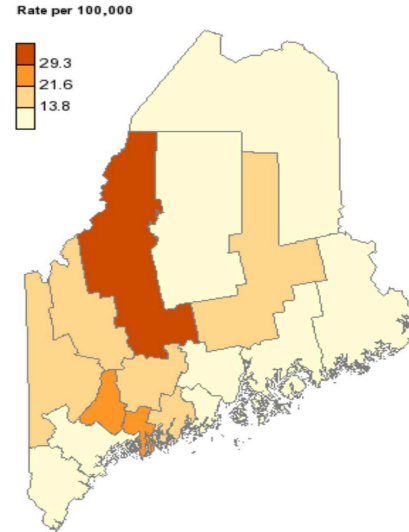


- Casco Bay water temperatures have increased 2.5°F between 1992 and 2018
- Between 2004 and 2013, the Gulf of Maine warmed 0.41°F per year, a rate faster than 99% of the world's oceans

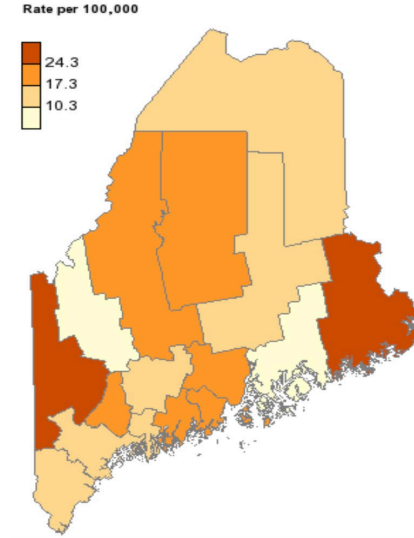
# WHAT THIS MEANS FOR YOU

Climate Impacts

Rate of Heat Illness ED Visits  
by County, Maine 2003  
Place Based on: Residence



Rate of Heat Illness ED Visits  
by County, Maine 2017  
Place Based on: Residence



## Health Risks

Rate of Heat Illness Emergency Department Visits  
by County in Maine from Maine CDC

## Shifting Ecosystems



## Strain on Critical Infrastructure



WHAT THIS MEANS  
FOR YOU

## Changing Natural Resource Economy



Climate Impacts



## Decline in Water Quality



## WHAT THIS MEANS FOR YOU



## Climate Impacts

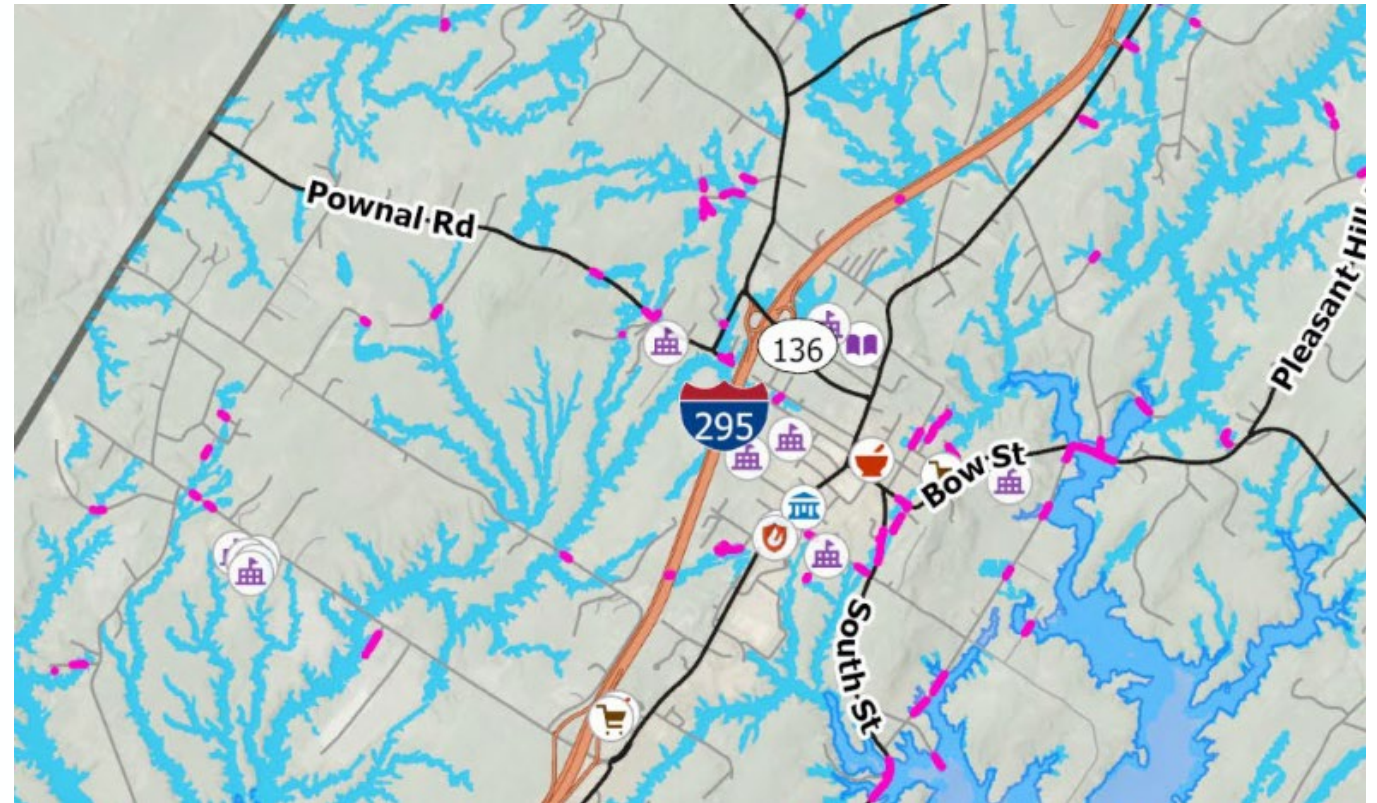


## Flooding and Erosion

# Freeport Flooding

## Impacts municipal infrastructure, homes, people

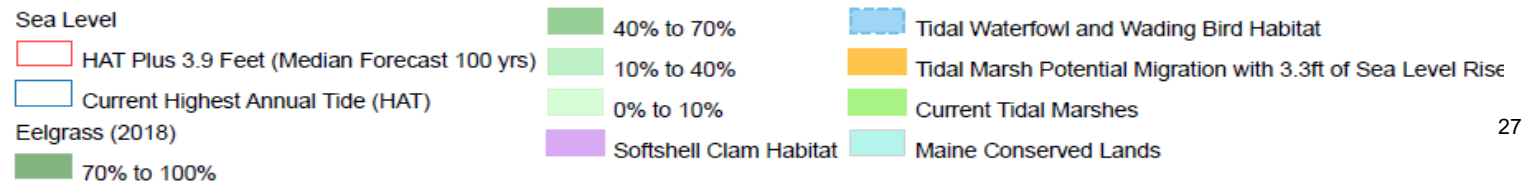
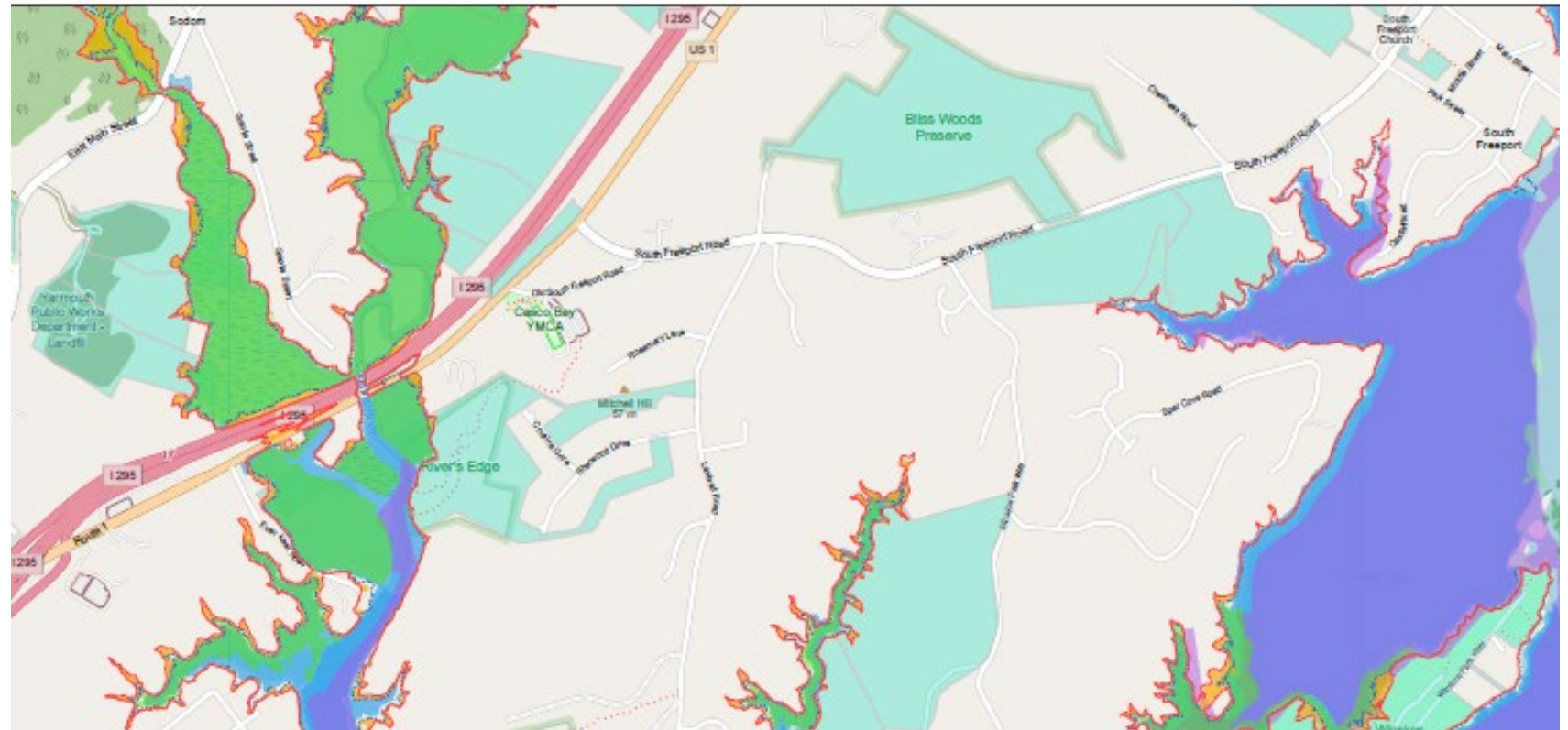
- 100-yr flood in 2050 - portions of over 100 roads will be flooded including parts of 295 and route 1
- Access to islands could be restricted
- Potential for neighborhoods to be cut off from access to services



# Freeport Ecosystems

## Key habitats and ecosystem resources at risk

- Tidal marshland migration constrained
- Eelgrass beds impacted by sea level rise and water quality
- Shellfish habitat and aquaculture viability



# Freeport Social Vulnerabilities

Not everyone will experience the impacts of climate change equally

**17.6%**

Residents 65 years and older who live alone

**55.0%**

of housing stock is older than 1980



**12.7%**  
homeowners who are cost burdened

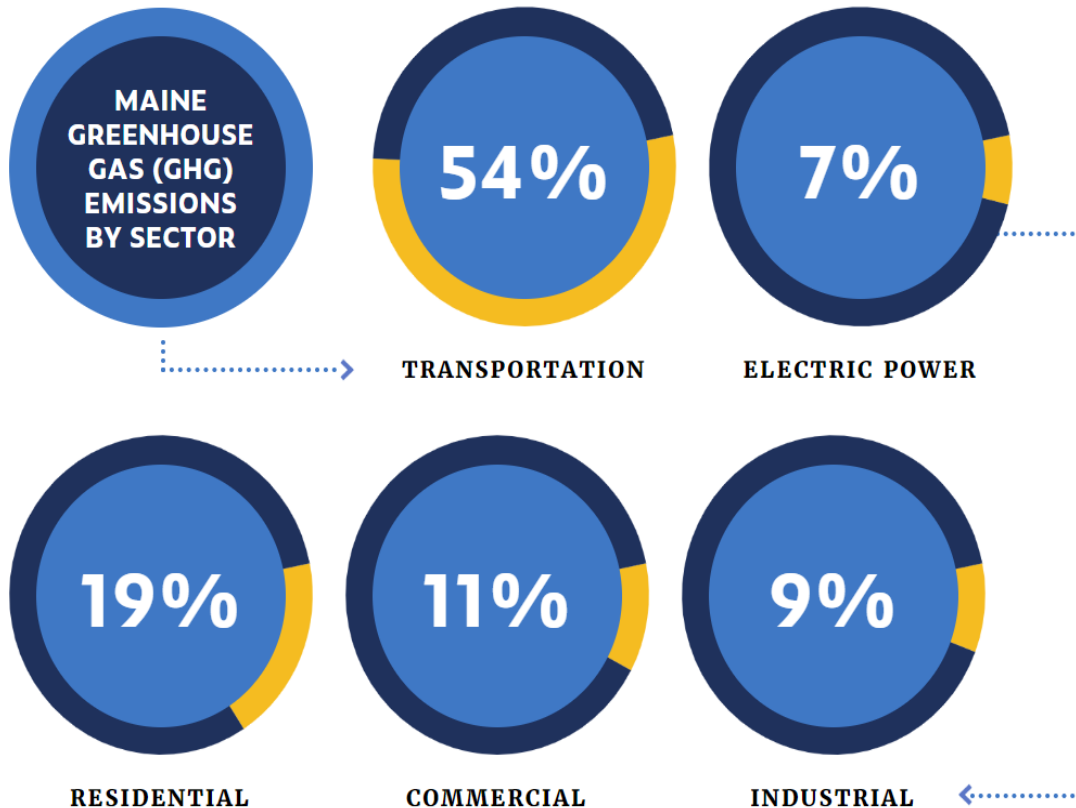


**45.3%**  
Renters who are cost burdened

Cost burdened households are those who spend 30% or more of their income on home or rental costs

# State and Freeport Emissions

## State Greenhouse Gas Inventory



## Freeport Emissions Data

- 4.2% of total emission in Cumberland County (2.8% of population)
- Estimated 16.6 Metric Tons of CO<sub>2</sub>e per household (4<sup>th</sup> highest in the county)

# 3

## Service Provider Activities

# ENROLLMENT PROCESS

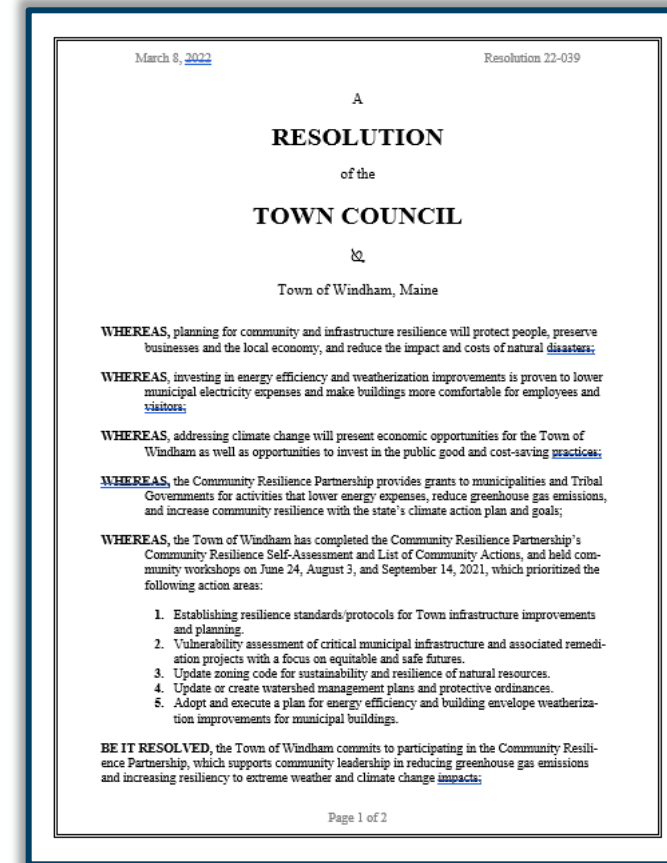


1. Municipal Resolution
2. Self-Evaluation and List of Community Actions
3. Overview of projects completed to date

# Municipal Resolution

## Resolution needs to be passed by mid-September

- Identifies priority action areas (high level)
- Names existing staff or committee to support planning, implementation
- Optional language citing climate hazards and impacts





# Self-Evaluation and List of Community Actions

## Sets baseline conditions and provides information on projects completed to date

**Community Resilience Partnership**  
[Community Resilience Partnership | Office of Policy Innovation & Future \(maine.gov\)](#)

Program Contact: Brian Ambrette  
 brian.ambrette@maine.gov

---

**Community Resilience Self-Evaluation**

**Instructions:** This tool is intended to help organize your community's approach to increasing resilience to natural hazards and climate change impacts. Answer the questions to the best of your knowledge and seek information from your colleagues in municipal and county government and organizations in your community. Provide any relevant information in the explanation field. If it is difficult to give a clear yes or no response to a question, use the explanation field to explain why. **There are no wrong answers and the responses here will not affect your community's eligibility to receive grants.** Where the response to a question is no, that may indicate an area of opportunity to address through a Community Action Grant.

<b>Community name:</b>	Bridgton
<b>Self-Evaluation responses provided by:</b> Please include contact info	Linda LaCroix, Director of Economic Development llaCroix@bridgtonmaine.org
<b>Date:</b>	April 25, 2022
<b>Was this evaluation discussed during a community workshop?</b> Include the date of the workshop.	No, this specific self-evaluation was not discussed during a community workshop, however we are gathering responses to such questions through interactions related to the update of our Comprehensive Plan.

Once the questions on the following pages are complete, use these prompts to identify potential next steps for your community:

<b>What are two things your community is doing well?</b>	Expanding critical infrastructure (e.g. wastewater, streetscapes) which has spurred an influx of new businesses and younger folks to our area; Supporting our service organizations through line items and the Community Development Block Grant program.
<b>What are two areas that could be improved in the short-term?</b>	Enhancing community engagement – bringing more folks into leadership roles and creating communication channels to increase our reach especially on impactful decision making; Developing a robust response to the increase in issues impacting the disadvantage exacerbated by the pandemic, to include mental health services, affordable housing, and job training.
<b>What is important for your community to address in the long-term?</b>	Broadband town-wide is most critical – it is the basic platform for the community to be able to access educational, medical, business opportunities and other key factors of well-being; Developing the mechanisms mentioned above to uplift our disadvantaged community.

Revised December 1, 2021
Page 1

Community Resilience Partnership List of Community Actions Revised December 1, 2021		
	Strategy Areas & Actions	Additional Resources (\$=funding source)
<b>Strategy Area A: Embrace the Future of Transportation</b>		
<b>Accelerate the Transition to Electric Vehicles (EVs)</b>		
	A1 Purchase or lease electric vehicles for municipal or tribal government-owned vehicle fleets. (Grants capped at \$2,000 per light duty EV.)	<a href="#">Efficiency Maine: Municipal EV rebates (\$)</a>
	A2 Install EV chargers in public parking areas.	<a href="#">Efficiency Maine: EV supply equipment initiative (\$)</a>
	A3 Adopt ordinances to encourage EV charging infrastructure, including at multifamily dwellings, businesses, and public parking areas.	<a href="#">Municipal Electric Vehicle Readiness Toolkit (Southern Maine Planning and Development Commission)</a>
	A4 Adopt an anti-idling ordinance.	<a href="#">Example: Bar Harbor Municipal Code</a>
<b>Improve Mobility and Reduce Vehicle Miles Traveled (VMT)</b>		
	A5 Implement strategies that increase public transit ridership and alternative transportation modes, including bike and walking infrastructure.	
	A6 Implement strategies that encourage municipal/tribal employees to commute via carpools, public transit, bike/walk, or other alternatives to single-occupancy vehicles.	
	A7 Adopt a telework policy for municipal/tribal government staff positions that can work remotely some days per week.	
	A8 Adopt land use and development policies in plans and codes that reduce the need for driving (e.g. locating schools, workplaces, and shopping near where people live; encouraging density of development near housing and transportation).	
	A9 Adopt a Complete Streets policy which addresses safety, bike/pedestrian uses, and transit.	<a href="#">Maine DOT Complete Streets</a>
	A10 Adopt a broadband plan that reduces the need to drive by increasing access to high speed internet for underserved residents to support telecommuting, access to remote education and telehealth.	<a href="#">Connect Maine planning and infrastructure grants (\$)</a>
<b>Strategy Area B: Modernize Maine's Buildings</b>		
<b>Transition to Cleaner Heating and Cooling, and Efficient Appliances in Municipal/Tribal Buildings</b>		
	B1 Adopt and execute a plan for energy efficiency and building envelope weatherization improvements for municipal/tribal buildings. Collaborate with	<a href="#">Efficiency Maine: Public Sector (\$)</a>

# FREEPORT KEY IMPACTS



## Self-Evaluation Highlights



Flooding from Harraseeket River



Inundation from sea level rise and storm surge



Degradation of infrastructure due to extreme storms and increased heat



# PROGRESS TO DATE



## Self-Evaluation Highlights



Key ordinances and plans to target flooding impacts



Opportunities to include climate risk - Comprehensive Plan update and Climate Action Plan



Developing local emergency management plan



# Projects Completed To-Date

Energy Innovation  
and Carbon  
Dividend Act of  
2021

Bonds for bike and  
pedestrian ways

Solar regulations

Hybrid fleet  
vehicles

Building and  
energy codes

Complete Streets  
Policy

Preservation of  
open space

Municipal Tree  
Task Force

Municipal building  
system upgrades

Lowered parking  
requirements

Zoning  
amendments  
Shoreland and  
Timber Harvesting

# Priority Action Areas for Consideration

- Improve Municipal Buildings – Building efficiency and electrification
- Create a climate change education, outreach, and engagement program
- Integrate climate considerations into local emergency management plan
- Share a full-time Sustainability Coordinator with Yarmouth – co-develop a Climate Action Plan
- Set targets to protect and conserve green space
- Reduce the vehicle miles traveled in the community through increase in transit and bike/pedestrian improvements
- Standardize assessment of climate considerations into project evaluation

# 4

## Questions/Discussion

# Instructions

## In person

- Review materials around the room
- Vote for your top priority area using provided stickers

## Virtual

- Review materials sent via chat on zoom
- Complete online survey to rank priority areas

# NEXT STEPS

- Municipal staff and committees work to scope out project
- Application for funding due Sept. 20th

