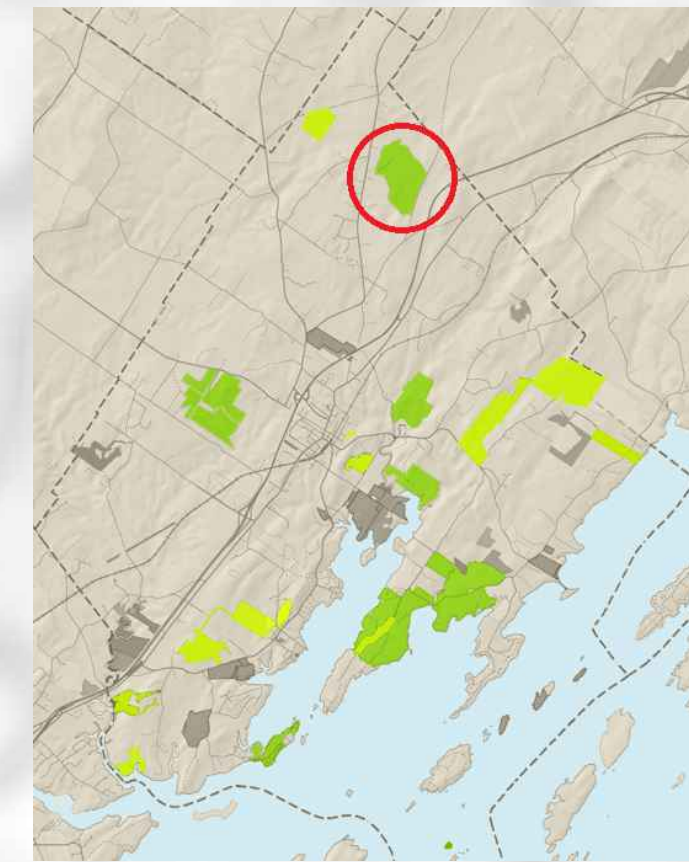
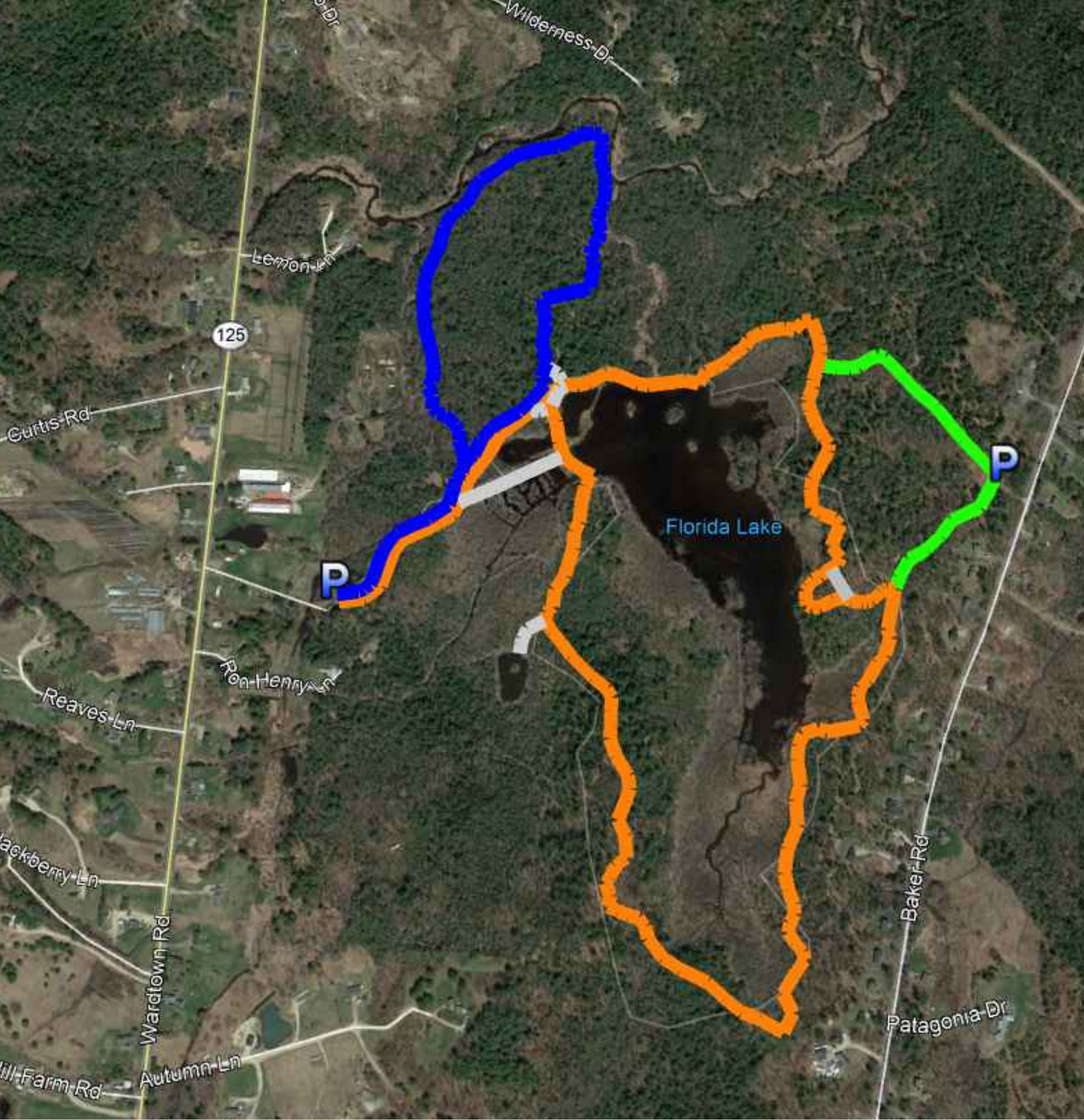


Town of Freeport
**Florida
Lake**



	Lake Loop Trail	
	Length: 2 Mi	Difficulty: Medium
	North Loop Trail	
	Length: 1 Mi	Difficulty: Medium
	Baker Road Trail	
	Length: 1/2 Mi	Difficulty: Medium
	Other Trails	
	Parking	



History:

Ron Cummings and his family farmed the land where Florida Lake is located for many years. He and his family raised chickens and beef, as well as harvested hay. According to historical notes from the Cummings family, beavers built a dam on the Collins Brook in the early 1940's, flooding almost 30 areas. The beavers eventually abandoned the dam, which washed out, leaving behind dead trees and other debris. In the early 1960's, the Cummings family began offering recreational opportunities on the property. An impoundment was built in the summer of 1964, and the resulting body of water created by it was named Florida Lake because its shape resembled the State of Florida. In the following years, the owners of the property installed a small railroad, operated an airboat and stocked the lake with trout. The area was operated as a recreational area for Freeport youth before being sold to Alan and Vera Rogers several years later. The area was turned into a private campground and was operated until the Town purchased the property in 2002.

Florida Lake is significant both from a local and regional perspective. A large block of unfragmented forest land extends from the northern edge of the site to the Durham Road in Brunswick. This is one of the largest contiguous blocks of habitat remaining in the Freeport/Brunswick region. The wetlands on the site remain in exceptional condition, largely due to the undeveloped character of the surrounding landscape including setback from major roads, the undeveloped nature of the shoreline and unfragmented overland access for wildlife.

Property Overview:

Florida Lake is an approximately 200-acre town-owned preserve that has about a 3 mile long trail system. Primary uses are low impact recreational activities such as walking, bird watching, running, snowshoeing, ice skating, hunting (with shotgun and bow only) and cross-country skiing. Bikes and All Terrain Vehicles (ATV's) are prohibited. Snowmobiles are allowed in designated areas. Dogs are allowed and all waste must be carried out. The preserve is for day use only and open from a half hour before sunrise to a half hour after sunset.

Directions: The trailhead and main parking area is located on Route 125 (Wardtown Road). Take Route 125 and 136 north from Exit 22 on Interstate 295. About 1 mile from Exit 22, at the blinking yellow light, turn right onto Route 125. Drive about 2 ½ miles along Route 125 until the blue Florida Lake sign on the right. Follow the gravel access road that starts at the sign over a culvert to the parking area.

Trail Accessibility Guide



Easy

Trails are relatively smooth and flat, with few obstructions such as roots or rocks. Trails may be accessible to people with less mobility.



Medium

Trails generally have some obstructions such as roots, rocks or wet areas. Trails may also have some slopes and uneven terrain.



Hard

Trails have large obstructions such as rocks, boulders and areas with standing or moving water. Trails have steep slopes and uneven terrain.

Town of Freeport Florida Lake

