

Freeport Fields & Trails Project

February 15, 2011



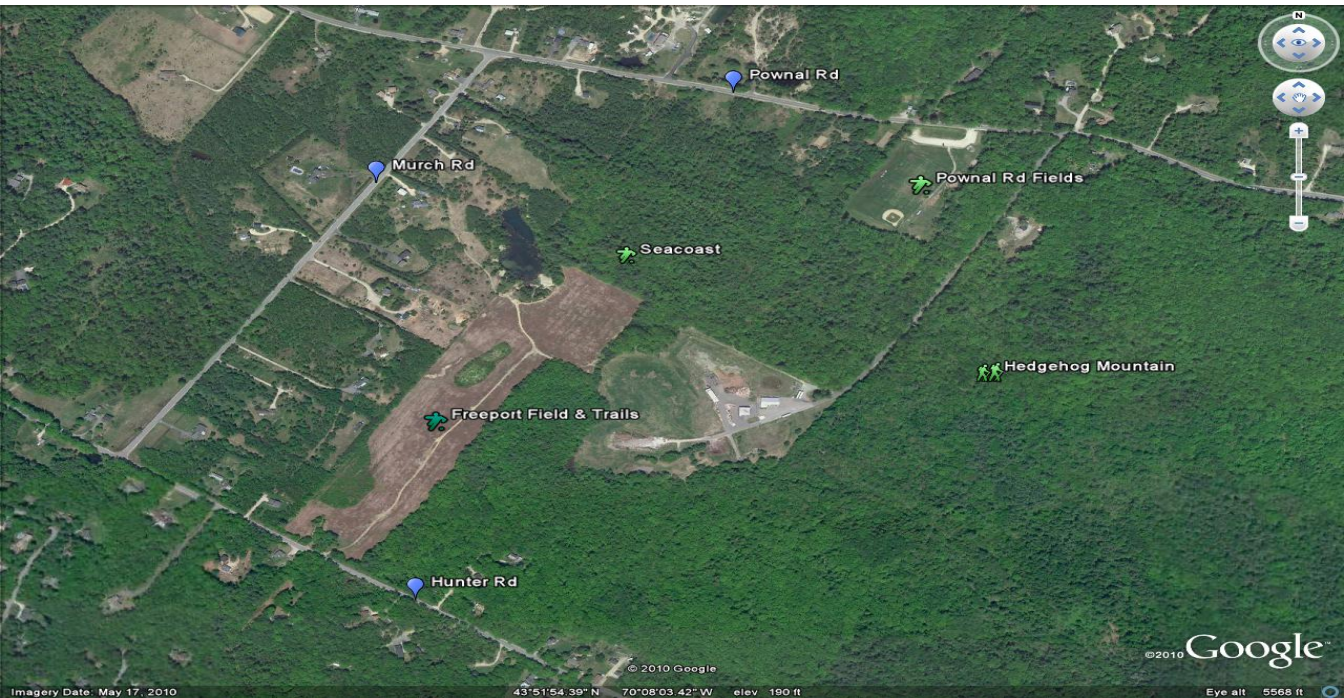
FEDC Mission

- ▶ The mission of the Freeport Economic Development Corporation is to partner with the community to promote sustainable economic growth that strengthens and diversifies the economic base and enhances the quality of life and unique character of Freeport.

Hunter Rd. Blueberry Fields



Aerial View



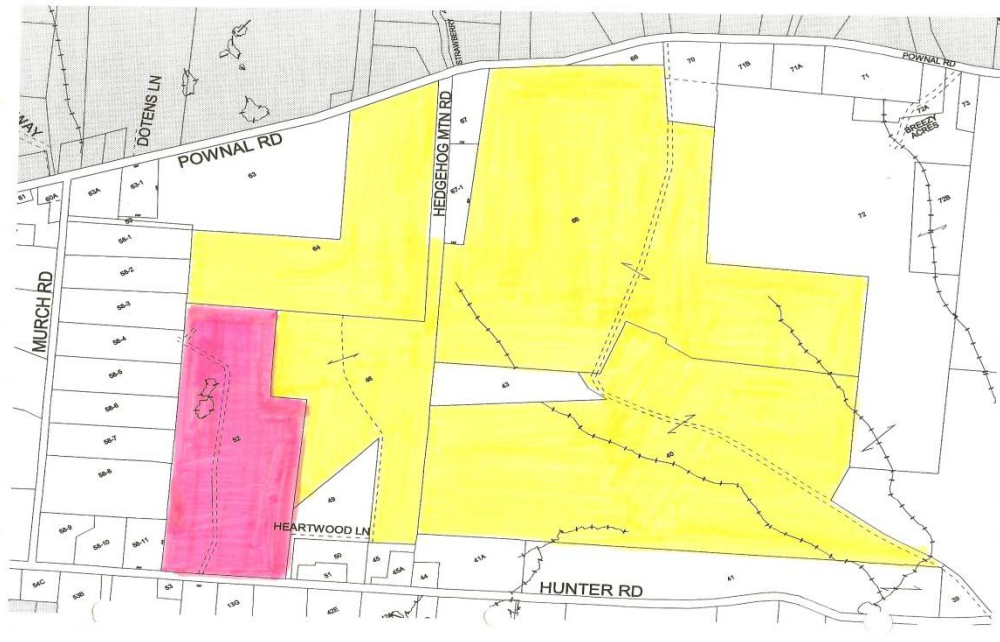
©2010 Google

Imagery Date: May 17, 2010

43°51'54.39" N 70°08'03.42" W elev 190 ft

Eye alt 5566 ft

► Town Owned Property



Vision

Softball

Baseball

Football

Field Hockey

Lacrosse

Soccer

RSU5 – HS & MS

Rugby

Cross Country Running

Nordic Skiing & Touring

Mountain Biking

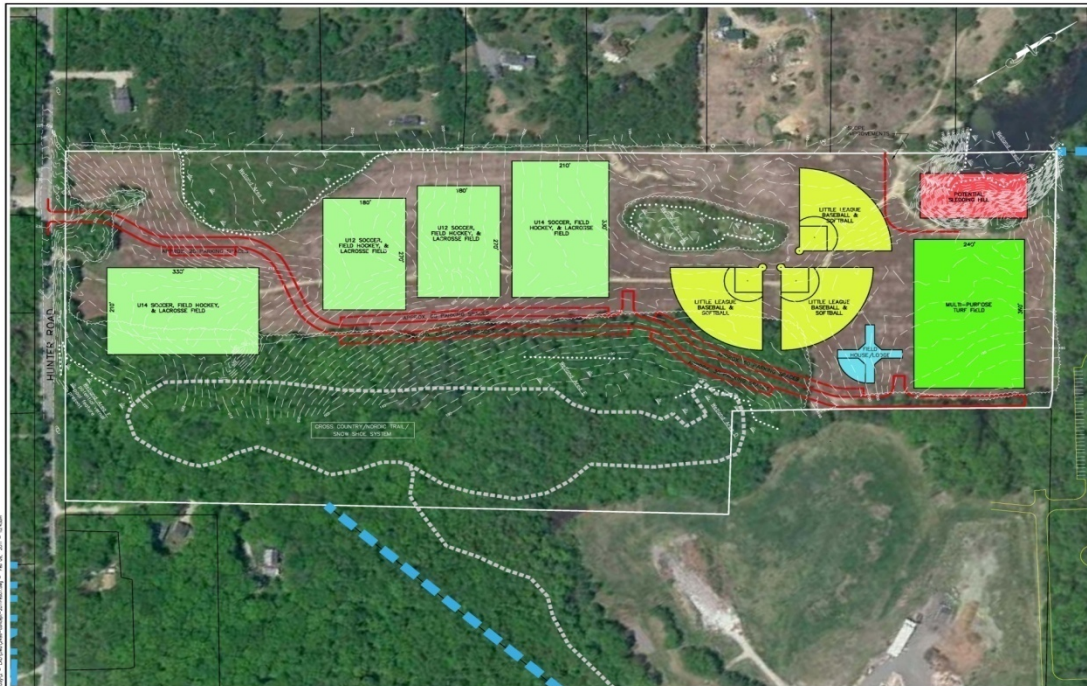
Hiking

Orienteering

Snow Shoeing

Sledding

Farmers Market



SPACE AND BULK STANDARDS		
PROVIDED	REQUIRED	PROVIDED
MIN. LOT SIZE	1.5 ACRES	38.41 ACRES
MIN. LOT FRONTAGE	300'	300'
MIN. BUILDING HEIGHT	30'	30'
BUILDING SETBACKS		
FRONT	50'	NA
REAR	50'	NA
SIDE	25'	NA
LAND AREA FOR DWELLING	1.5 ACRES	NA
MIN. LOT WIDTH	100'	NA

NOTES:

1. PROPERTY LINE INFORMATION AND SETBACKS ARE BASED ON THE RECORD MAP AND THE BULK PROVIDED BY THE TOWN OF FREETOWN.
2. EXISTING PLAN PROVIDED BASED ON AERIAL PHOTOGRAPHY AND CONCEPTUAL DESIGN INFORMATION.
3. CONCEPT PLAN PROVIDED WITHOUT CONSIDERATION OF ANY OTHER INFORMATION OR DATA.
4. THE PROJECT SITE DOES NOT APPEAR TO BE LOCATED WITHIN A 100-YEAR FLOOD PLAIN.

NOTE: THIS PLAN SET IS SUBMITTED FOR PERMITTING PURPOSES AND SHALL NOT BE USED FOR CONSTRUCTION.



Rev.	Date	Revision

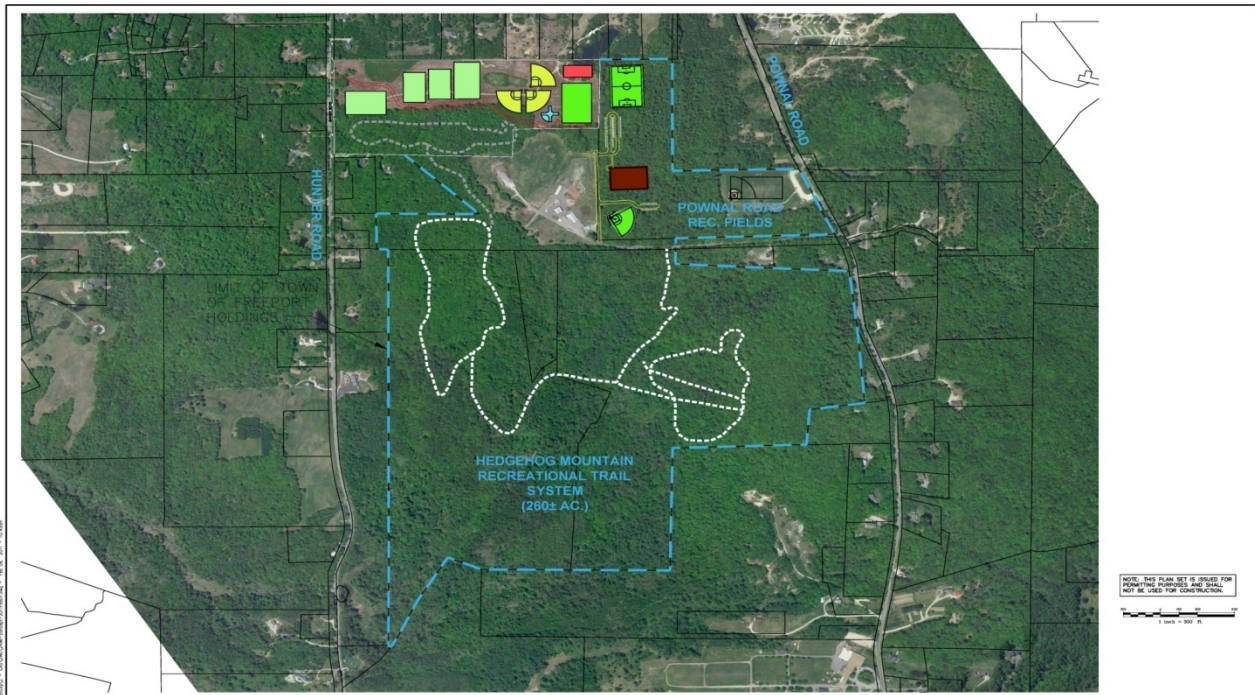
Rev.	Date	Revision

Rev.	Date	Revision

Gp Gorrill-Palmer Consulting Engineers, Inc.
 Engineering Excellence Since 1898
 PO Box 1237
 15 Shiner Road
 Gorham, ME 04039
 207-837-8810
 FAX: 207-837-8812
 E-Mail: info@gp-engineers.com

Project Name:	Concept Plan
Project:	Athletic Field Complex Hunter Road, Freetown, Maine
Drawing No.:	1

\\gpc\server\cadd\proj\2017\2017-02-01\2017-02-01.dwg - 10:00:00 - 10:00:00



Rev.	Date	Revision

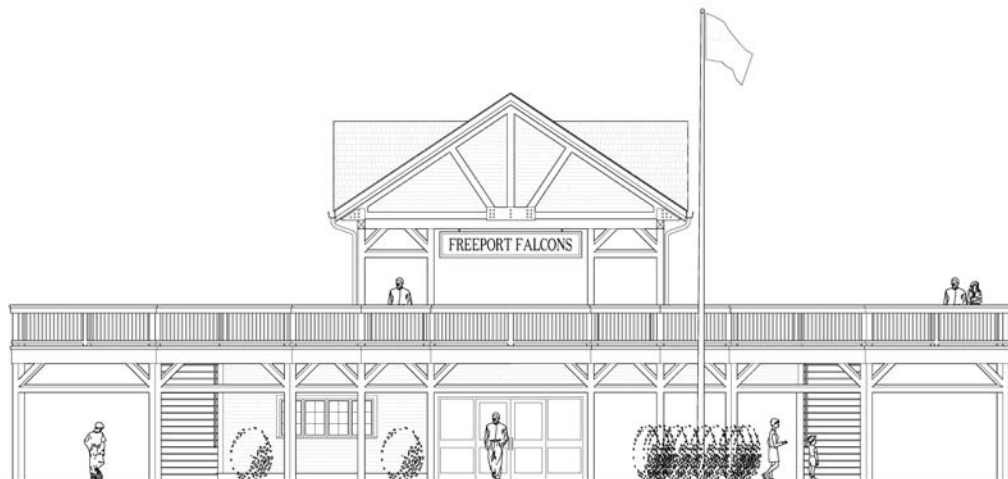
Issued For	Date	By

Drawn	Check	Date	By

This plan shall not be modified without permission from Gorrill-Palmer Consulting Engineers, Inc. (GPCE). Any alterations, deletions or additions shall be in the original scale and without altering the GPCE.

GP Gorrill-Palmer Consulting Engineers, Inc.
 PO Box 1037 Engineering Excellence Since 1998 207-651-8810
 20 Greer Road FAX 207-651-8812
 Gray, ME 04439 E-Mail: mtp@gpce.com

Drawing Name	Drawing No.
Overall Concept Plan	2
Project:	
Athletic Field Complex Hunter Road, Freetown, Maine	



1

MAIN ELEVATION - WEST ORIENTATION

N.T.S.



CORPORATE ID: 1111
THIS IS A PRELIMINARY DRAWING. THE CONTENTS OF THIS DRAWING IS NOT FOR CONSTRUCTION. IT IS NOT A CONTRACT. IT IS NOT A GUARANTEE OF PERFORMANCE.

REVISIONS



281 VIKANDA ST. Phone: 207-761-0344
PORTLAND, ME 04103 Fax: 207-699-0344
Online at: www.foresidearchitects.com

Project Status:
PRELIMINARY
DESIGN

Project Number:
FAC111

Project Title:
FREEPORT ATHLETIC CENTER
Freeport, Maine

Drawing Name:
Proposed Building Mass Elevation

Scale:
N.T.S.

SHEET

Date:
01/03/11

A-4

PRELIMINARY PLANS
Not for Construction

REVISIONS



281 VERANDA ST. Phone: 207-781-3344
 PORTLAND, Maine 04103 Fax: 207-699-3344
 Online @ - foresidearchitects.com

Project Status:
 PRELIMINARY
 DESIGN

Project Number:
 FAC111

Project Title:
 FREEPORT ATHLETIC CENTER
 Freeport, Maine

Drawing Name:
 Proposed Building Ground Floor Plan

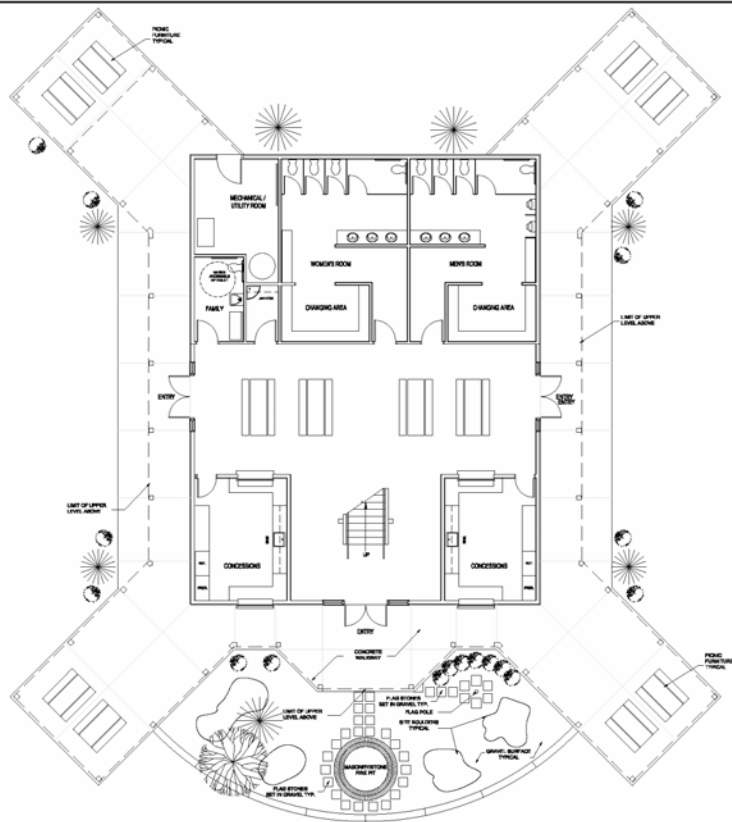
Scale:
 3/16"=1'-0"

Date:
 02/05/11

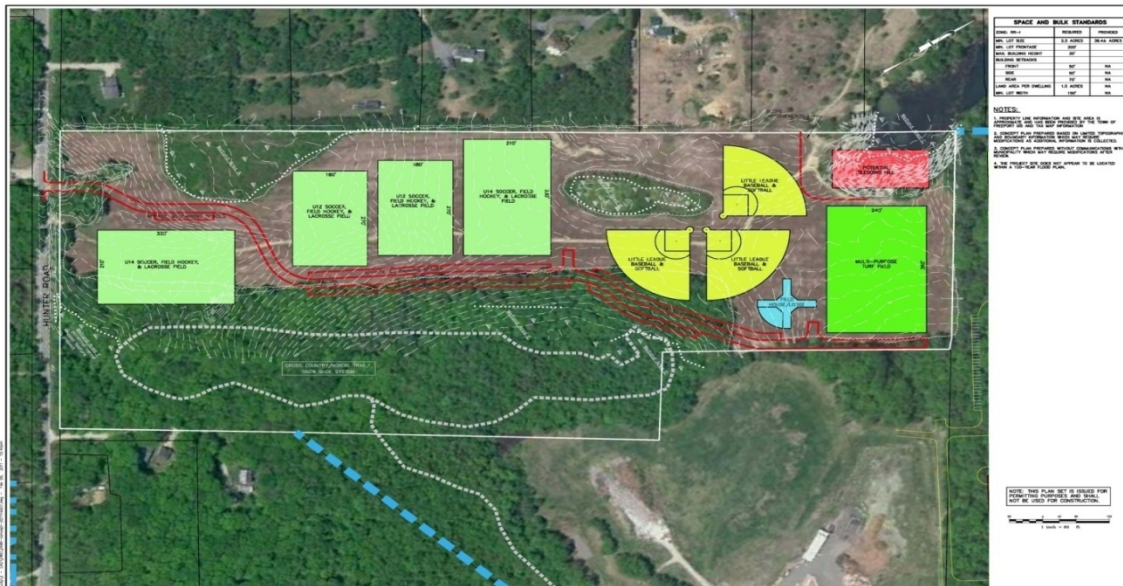
SHEET

A-1

PRELIMINARY PLANS
 Not for Construction



1 GROUND FLOOR PLAN
 3/16"=1'-0"



SPACE AND BULK STANDARDS		
TYPE	REQUIRED	PROPOSED
MIN. LOT SIZE	2.5 ACRES	2.5 ACRES
MIN. LOT FRONTAGE	200'	200'
MIN. SETBACK	25'	25'
MIN. SIDE SETBACK	25'	25'
MIN. REAR SETBACK	25'	25'
MIN. LOT WIDTH	120'	120'

NOTES:
 1. PROPERTY LINES AND DIMENSIONS ARE BASED ON THE RECORD MAP OF THE PROJECT AND THE RECORD MAP OF THE PROJECT.
 2. PROPERTY LINES AND DIMENSIONS ARE BASED ON THE RECORD MAP OF THE PROJECT AND THE RECORD MAP OF THE PROJECT.
 3. PROPERTY LINES AND DIMENSIONS ARE BASED ON THE RECORD MAP OF THE PROJECT AND THE RECORD MAP OF THE PROJECT.
 4. PROPERTY LINES AND DIMENSIONS ARE BASED ON THE RECORD MAP OF THE PROJECT AND THE RECORD MAP OF THE PROJECT.
 5. THE PROJECT SITE AREA MAY BE SUBJECT TO BE LOCATED WITHIN THE PROJECT SITE.

NOTE: THIS PLAN SET IS DESIGNED FOR PRELIMINARY PURPOSES AND SHALL NOT BE USED FOR CONSTRUCTION.

1 inch = 50 feet

DATE	REVISION

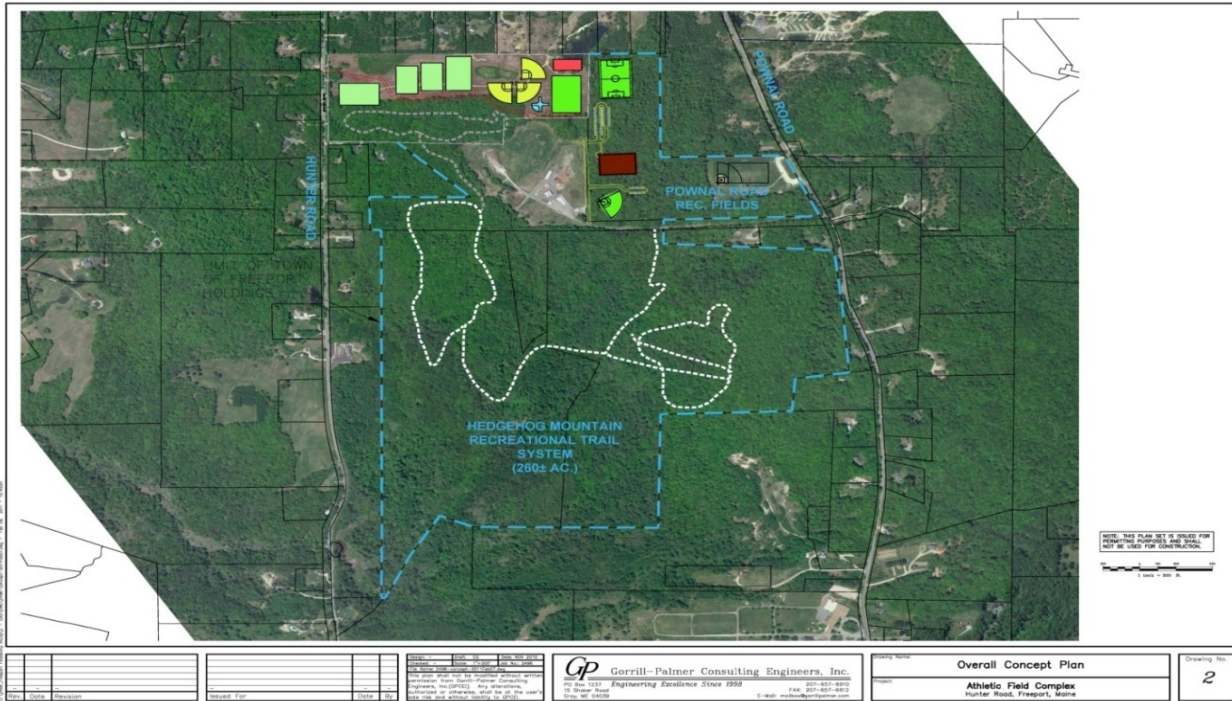
DATE	REVISION

DATE	REVISION

GP Gorrell-Palmer Consulting Engineers, Inc.
 Engineering Excellence Since 1958
 201-857-8810
 201-857-8811
 201-857-8812
 201-857-8813
 201-857-8814
 201-857-8815
 201-857-8816
 201-857-8817
 201-857-8818
 201-857-8819
 201-857-8820
 201-857-8821
 201-857-8822
 201-857-8823
 201-857-8824
 201-857-8825
 201-857-8826
 201-857-8827
 201-857-8828
 201-857-8829
 201-857-8830
 201-857-8831
 201-857-8832
 201-857-8833
 201-857-8834
 201-857-8835
 201-857-8836
 201-857-8837
 201-857-8838
 201-857-8839
 201-857-8840
 201-857-8841
 201-857-8842
 201-857-8843
 201-857-8844
 201-857-8845
 201-857-8846
 201-857-8847
 201-857-8848
 201-857-8849
 201-857-8850
 201-857-8851
 201-857-8852
 201-857-8853
 201-857-8854
 201-857-8855
 201-857-8856
 201-857-8857
 201-857-8858
 201-857-8859
 201-857-8860
 201-857-8861
 201-857-8862
 201-857-8863
 201-857-8864
 201-857-8865
 201-857-8866
 201-857-8867
 201-857-8868
 201-857-8869
 201-857-8870
 201-857-8871
 201-857-8872
 201-857-8873
 201-857-8874
 201-857-8875
 201-857-8876
 201-857-8877
 201-857-8878
 201-857-8879
 201-857-8880
 201-857-8881
 201-857-8882
 201-857-8883
 201-857-8884
 201-857-8885
 201-857-8886
 201-857-8887
 201-857-8888
 201-857-8889
 201-857-8890
 201-857-8891
 201-857-8892
 201-857-8893
 201-857-8894
 201-857-8895
 201-857-8896
 201-857-8897
 201-857-8898
 201-857-8899
 201-857-8900
 201-857-8901
 201-857-8902
 201-857-8903
 201-857-8904
 201-857-8905
 201-857-8906
 201-857-8907
 201-857-8908
 201-857-8909
 201-857-8910
 201-857-8911
 201-857-8912
 201-857-8913
 201-857-8914
 201-857-8915
 201-857-8916
 201-857-8917
 201-857-8918
 201-857-8919
 201-857-8920
 201-857-8921
 201-857-8922
 201-857-8923
 201-857-8924
 201-857-8925
 201-857-8926
 201-857-8927
 201-857-8928
 201-857-8929
 201-857-8930
 201-857-8931
 201-857-8932
 201-857-8933
 201-857-8934
 201-857-8935
 201-857-8936
 201-857-8937
 201-857-8938
 201-857-8939
 201-857-8940
 201-857-8941
 201-857-8942
 201-857-8943
 201-857-8944
 201-857-8945
 201-857-8946
 201-857-8947
 201-857-8948
 201-857-8949
 201-857-8950
 201-857-8951
 201-857-8952
 201-857-8953
 201-857-8954
 201-857-8955
 201-857-8956
 201-857-8957
 201-857-8958
 201-857-8959
 201-857-8960
 201-857-8961
 201-857-8962
 201-857-8963
 201-857-8964
 201-857-8965
 201-857-8966
 201-857-8967
 201-857-8968
 201-857-8969
 201-857-8970
 201-857-8971
 201-857-8972
 201-857-8973
 201-857-8974
 201-857-8975
 201-857-8976
 201-857-8977
 201-857-8978
 201-857-8979
 201-857-8980
 201-857-8981
 201-857-8982
 201-857-8983
 201-857-8984
 201-857-8985
 201-857-8986
 201-857-8987
 201-857-8988
 201-857-8989
 201-857-8990
 201-857-8991
 201-857-8992
 201-857-8993
 201-857-8994
 201-857-8995
 201-857-8996
 201-857-8997
 201-857-8998
 201-857-8999
 201-857-9000

Concept Plan
 Athletic Field Complex
 Hunter Road, Freeport, Maine

Drawing No. **1**



NO.	DATE	REVISION

NO.	DATE	REVISION

NO.	DATE	REVISION

GP Gorrill-Palmer Consulting Engineers, Inc.
 PO Box 1037 Engineering Excellence Since 1998
 10, Chapel Road
 South, ME 04076
 TEL: 207-657-8992 FAX: 207-657-8992
 E-Mail: info@gorillpalmer.com

Project Name:	Overall Concept Plan
Project:	Athletic Field Complex Hunter Road, Freeport, Maine

Drawing No.	2
-------------	---

Tournaments & Events



Maintenance

- ▶ 3 Year Maintenance Agreement


Scheduling

- ▶ Proposed: RSU5 Recreation and Community Education

Freeport Fields & Trails Cost Summary


▶ Land Acquisition & Permitting	425,000
▶ Sitework – Fields and Trails	1,900,000
▶ Recreational Lodge	575,000
▶ 3–Year Field Maintenance Program	375,000
▶ Contingency	<u>200,000</u>
	\$3,475,000

Timing – Complete

- ▶ Engineering & Studies
 - Survey
 - Wetland Study
 - Soil Tests
 - Fields Layout Plan
 - Trails Layout Plan
 - Recreational Lodge Plans
 - Cost Estimates/Budget
- 

Timing – Complete

- ▶ Community Outreach

- ▶ Town Councilors
 - ▶ FEDC Board
 - ▶ RSU5 – Recreational Fields Subcommittee
 - ▶ LL Bean and other business leaders
 - ▶ Maine DEP, Army Corps of Engineers
 - ▶ Neighborhood Meeting
 - ▶ Public Information Meeting
- 

Timing – Next Step

- ▶ Town Council to discuss funding sources



Timing – Achievable Goals

- ▶ Permitting: Spring 2011
 - ▶ Construction – Summer 2011
 - ▶ Trails Available – Fall 2011
 - ▶ Fields Available – Fall 2012
- 

